

# ROCKY MOUNTAIN HOUSE

*Where Adventure Begins!*

## 2020 Community Profile

### for Rocky Mountain House

OFFICE  
ROCKY MOUNTAIN HOUSE

This project was made available through Community & Regional Economic Support (CARES) funding, in partnership with the Central Alberta Economic Partnership (CAEP)

SUPPORT

Community and Regional  
Economic Support Program  

---

**(CARES)**



---

V 1.0

December 2019

© 2019 Rocky Mountain House

---

Information in this document is subject to change without notice. Although all data is believed to be the most accurate and up-to-date, the reader is advised to verify all data before making any decisions based upon the information contained in this document.

**Jeff Hartling**

**Economic Development Officer**

**Town of Rocky Mountain House**

Office: 403-847-5260 | Fax: 403-845-1835

[www.rockymtnhouse.com](http://www.rockymtnhouse.com)



# Rocky Mountain House 2020 Community Profile

## Table of Contents

<b>1. DATA SOURCES</b> .....	<b>3</b>
<b>2. INTRODUCTION</b> .....	<b>4</b>
2.1 Location.....	5
2.2 Largest Employers.....	6
2.3 Climate.....	7
<b>3. DEMOGRAPHICS</b> .....	<b>8</b>
3.1 Population Size and Growth.....	8
3.2 Age Profile.....	8
3.3 Income, Households and Attainability.....	11
3.4 Mobility Characteristics.....	15
3.5 Language Characteristics .....	16
3.6 Level of Education .....	17
<b>4. LABOUR FORCE</b> .....	<b>21</b>
4.1 Key Indicators .....	21
4.2 Labour Force by Occupation .....	22
4.3 Labour Force by Industry .....	23
4.4 General Wages by Occupation .....	24
4.5 Place of Work .....	26
<b>5. TRANSPORTATION AND SHIPPING</b> .....	<b>28</b>
5.1 Highways.....	28
5.2 Rail Services .....	30
5.3 Airports .....	31
<b>6. TAXES AND UTILITIES</b> .....	<b>32</b>
6.1 Local Property Tax Rates.....	32
6.2 Federal and Provincial Income Tax Rates .....	32
6.3 Water/Wastewater and Waste Management.....	34
6.4 Electricity.....	37
6.5 Natural Gas.....	40
<b>7. BUSINESS SUPPORT PROGRAMS AND SERVICES</b> .....	<b>41</b>
7.1 National and Provincial Support Organizations .....	41
7.2 Local/Regional Support .....	42
7.3 Education and Training.....	43
7.4 Financial and Real Estate Institutions .....	44
7.5 Local Media.....	46
7.6 Communications Infrastructure .....	47
<b>8. TOURISM</b> .....	<b>48</b>
<b>9. QUALITY OF LIFE</b> .....	<b>50</b>
9.1 Lifestyle.....	50
9.2 Health Service.....	51
9.3 Community Protection Services .....	52
9.4 Education.....	54
9.5 Recreational Facilities .....	55
9.6 Local Events.....	57
<b>APPENDIX: FEDERAL AND PROVINCIAL ECONOMIC DEVELOPMENT SUPPORT PROGRAMS</b> ..	<b>58</b>





# Rocky Mountain House 2020 Community Profile

---

## List of Tables

Table 1: Largest Private Sector Employers .....	6
Table 2: Largest Public Sector Employers.....	6
Table 3: Average Temperature and Precipitation, 2010-2019 .....	7
Table 4: Population Change, 2006 - 2029.....	8
Table 5: Age Distribution, 2019 .....	10
Table 6: Total Individual Income Levels, 2019 .....	11
Table 7: Employment Income Levels, 2018.....	12
Table 8: Households and Dwelling Attainability, 2018.....	13
Table 9: Mobility Rates, 2019 .....	15
Table 10: Knowledge of Official Languages, 2019.....	16
Table 11: Most Common Non-Official Languages Spoken, 2019 .....	16
Table 12: Educational Attainment, 2019 .....	18
Table 13: Major Field of Study, Population Aged 15 Years or Older, 2019 .....	20
Table 14: Labour Force Characteristics, 2019 .....	21
Table 15: Labour Force Characteristics by Age and Gender, 2019 .....	21
Table 16: Labour Force by Industry, 2019 .....	23
Table 17: General Wages by Occupation.....	24
Table 18: Where Rocky Mountain House Resident Labour Force Works, 2016 .....	26
Table 19: Place of Residence for Workers in Rocky Mountain House, 2016 .....	27
Table 20: Distance to Major Urban Centres.....	29
Table 21: Distance to Major US Border Crossings.....	29
Table 22: Regional Airports.....	31
Table 23: Local Property Tax Rates, 2019 .....	32
Table 24: Corporate Taxes – General Corporation (2019 – 2020) .....	32
Table 25: Corporate Taxes – Canadian Controlled (2019 – 2020) .....	33
Table 26: Sales Tax, Alberta.....	33
Table 27: Personal Income Tax, 2017-2018.....	33
Table 28: Water and Sanitary Water Rates .....	34
Table 29: Landfill and Tipping Fees.....	35
Table 30: Commercial Rates.....	37
Table 31: General and Large Service Rates, 2019 .....	38
Table 32: Natural Gas Distribution - Service Rates.....	40
Table 33: Nation-Wide Business Support.....	41
Table 34: Local, Regional and Provincial Business Support Networks.....	42
Table 35: Postsecondary Institutions and Training .....	43
Table 36: Radio.....	46
Table 37: Newspaper, Print or Online .....	46
Table 38: Communications Infrastructure .....	47
Table 39: Protective Services .....	52
Table 40: Elementary and Secondary Schools.....	54
Table 41: Recreation, Culture and Sports Facilities .....	55



# Rocky Mountain House 2020 Community Profile

---

## Fist of Figures

Figure 1: Rocky Mountain House Location Map .....	5
Figure 2: Temperature and Precipitation Averages, 2010-2019 .....	7
Figure 3: Population by Age Group, Compared to Alberta .....	9
Figure 4: Household Income Levels, 2018.....	13
Figure 5: Occupied Dwellings by Structure Type, 2019 .....	14
Figure 6: Educational Attainment, Age Group 25-64, 2019.....	17
Figure 7: Major Field of Study, Population Aged 15 Years or Older, 2019 .....	19
Figure 8: Labour Force by Occupation by 1-digit NOCS Code, 2019 .....	22
Figure 9: Local Events and Festivals.....	57



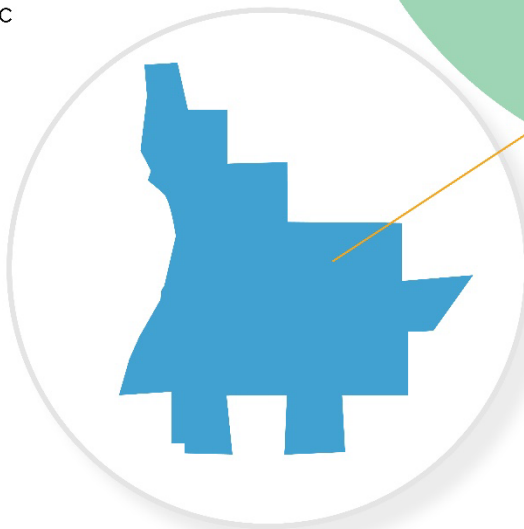
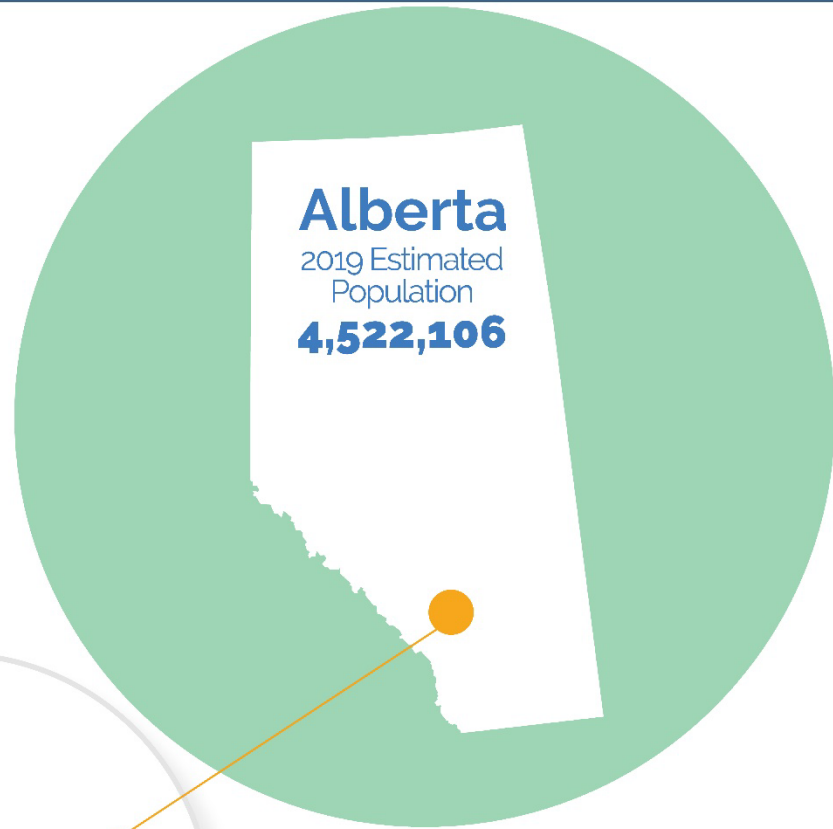
# A Snapshot of Rocky Mountain House

## Location

Rocky Mountain House is a town in west-central Alberta, Canada located west of the City of Red Deer at the confluence of the Clearwater and North Saskatchewan Rivers, and at the crossroads of Highway 22 (Cowboy Trail) and Highway 11 (David Thompson Highway). The town has a long history dating to the 18th century with the presence of British and Canadian fur traders during the westward Canadian expansion.

Popular attractions to the area include:

- Rocky Mountain House Historic Site
- Rocky Museum
- Crimson Lake Provincial Park
- Siffleur Falls
- Klondike Ventures dog sledding experience
- Brazeau Collieries Mine Site
- Christenson Sports & Wellness Centre



*Rocky Mountain House's 2019 Estimated Population*

**6,722**



## Market Access

82km	.....	Red Deer
198km	.....	Calgary
215km	.....	Edmonton
418km	.....	Lethbridge
486km	.....	Medicine Hat
464km	.....	US Border Crossing

# Demographics



## POPULATION ESTIMATES

**6,722** 2019

**6,635** 2016\*

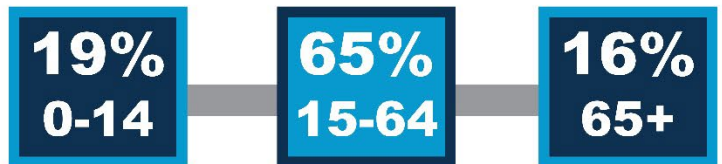
**6,933** 2011\*

**6,874** 2006\*

## MEDIAN & AVERAGE AGE



## AGE PROFILE



\* 2006-2016 Statistic Canada Census Data.

**6%**

**1 Year Mobility**

Residents that moved to the area in the previous year



**22%**

**5 Year Mobility**

Residents that moved to the area in the past 5 years

## HIGHEST EDUCATION LEVEL

**30%**

**Secondary**

**54%**

**Post-secondary**



## LANGUAGE

**5%**  
English & French

**95%**  
English

All data sourced from Manifold SuperDemographics 2019 unless otherwise specified.





# Labour Force



**Median  
Employment  
Income**

**\$48,325**

ALBERTA MEDIAN  
**\$48,190**

**Average  
Employment  
Income**

**\$63,643**

ALBERTA AVERAGE  
**\$69,431**

## PARTICIPATION

ALBERTA  
71.8%

**70.8%**

## EMPLOYMENT

ALBERTA  
66.7%

**64%**

## UNEMPLOYMENT

ALBERTA  
7.1%

**9.6%**

## RESIDENT LABOUR FORCE EMPLOYMENT

### TOP 5 INDUSTRIES\*\*



Retail Trade  
(13%)



Mining, Quarrying  
& Oil and Gas  
Extraction  
(12%)



Construction  
(11%)



Accomodation &  
Food Services  
(10%)



Health Care &  
Social Assistance  
(10%)

### TOP 5 OCCUPATIONS\*\*



Sales & Service  
(25%)



Trades, Transport  
& Equipment  
Operators  
(19%)



Business,  
Finance &  
Administration  
(11%)



Education, Law &  
Social, Community  
& Government  
(10%)



Management  
(8%)

\*\* by labour force employment

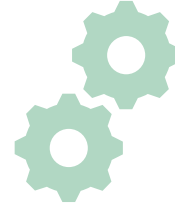
All data sourced from Manifold SuperDemographics unless otherwise specified.



## 1. DATA SOURCES

Please note that every effort has been made to use the most current data available. The major sources of information for this document are:

- The 2006, 2011, and 2016 Census from Statistics Canada;
- Government of Alberta Interpolated Weather Data Since 1961 for Alberta Townships; and
- SuperDemographics 2019 from Manifold Data Mining Inc.



The most recent Census was conducted in May 2016. SuperDemographics 2019 is the most up to date estimation of population characteristics, based on mathematical models that draw from various data sources.

### Manifold Projection Method:

Manifold estimates demographic data annually, including population projections for 5 and 10 years in the future. Manifold methodologies are based on the following techniques:

- Enhanced cohort survival methods;
- Nearest neighbourhood and regression techniques; and
- Structural coherence techniques.

Manifold Data Sources include:	
Statistics Canada	Real Estate Boards/Companies
Health Canada	Canadian Bankers Association
Regional Health Ministries	Bank of Canada
Citizenship and Immigration Canada	Canada Post Corporation
Regional School Boards	Consumer and business directories books
Brisc International Inc.	Publications of hospitals, CMHC, BBM and partners
Flyer Distribution Association	Proprietary survey and research

## 2. INTRODUCTION

Rocky Mountain House is a town in west-central Alberta, Canada located west of the City of Red Deer at the confluence of the Rocky Mountain House and North Saskatchewan Rivers, and at the crossroads of Highway 22 (Cowboy Trail) and Highway 11 (David Thompson Highway).

The town has a long history dating to the 18th century with the presence of British and Canadian fur traders during the westward Canadian expansion. In 1799, the Hudson's Bay Company and the North West Company each established the Rocky Mountain House and Acton House fur trading posts. Trade with the local Indigenous peoples continued until 1821 when the companies merged, they continued to trade until 1875 and closed the Rocky Mountain House post. The name of the settlement however remained. The Rocky Mountain House settlement also served as a launching point for many explorers such as David Thompson, in search for a passage west to the Pacific Ocean. Many travelers used this location as a stop on their way further west or northwest, just as they do into the 21st century.

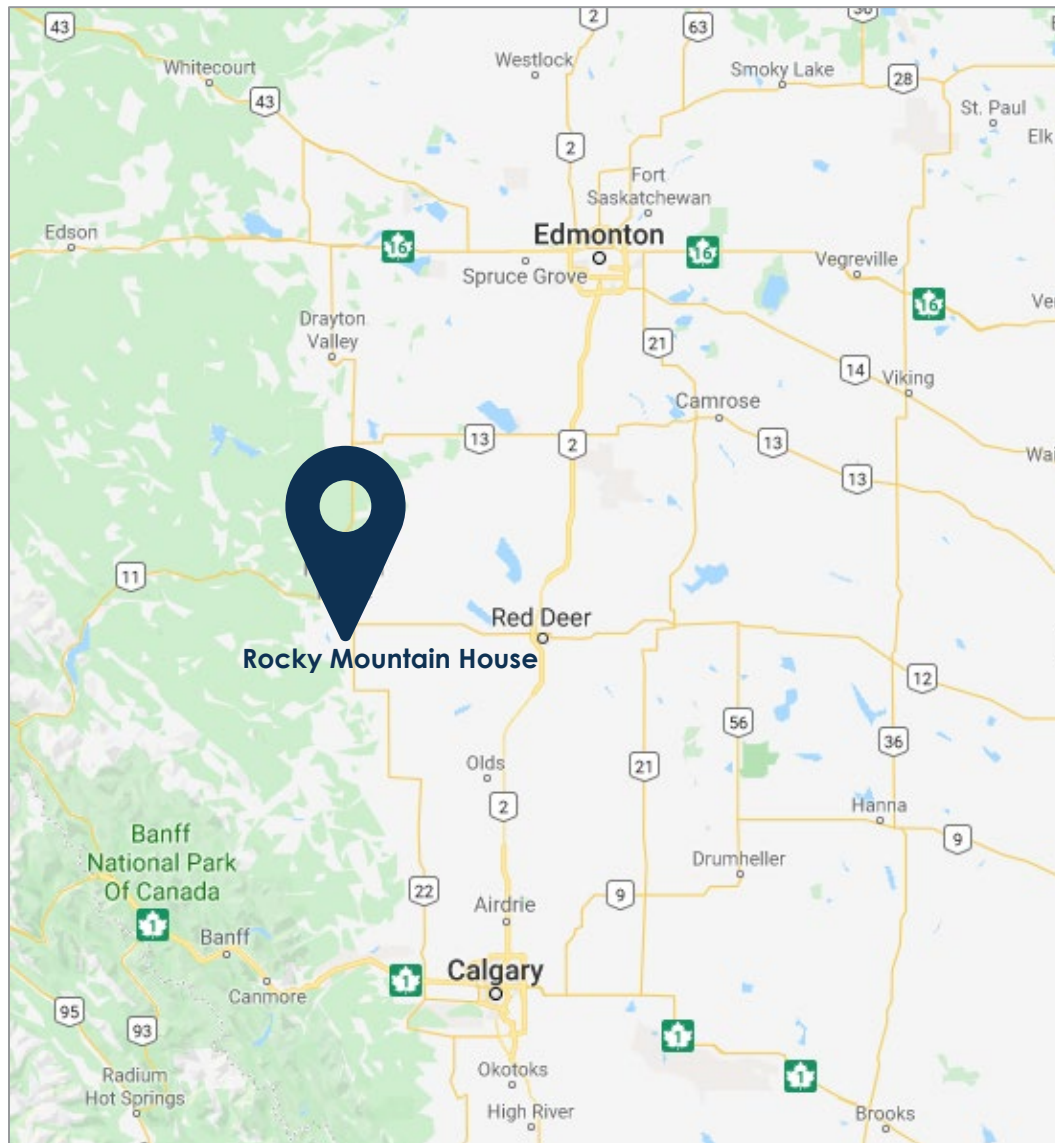


## 2.1 Location

Rocky Mountain House is situated at the crossroads of Highway 22 (Cowboy Trail) and Highway 11 (David Thompson Highway). Alberta Provincial Highway No. 22, commonly referred to as Highway 22 and officially named Cowboy Trail, is a 584-kilometre (363 mile) highway that parallels Highway 2, beginning in the foothills of southern Alberta at Highway 3.



**Figure 1: Rocky Mountain House Location Map**



Source: Google Maps



## 2.2 Largest Employers



Tables 1 and 2 identify some of the largest private and public employers located in Rocky Mountain House, the industries they operate in most commonly by North American Industry Classification System (NAICS) codes, and employment level.

Table 1 provides a list of the largest private sector employers located in Rocky Mountain House.

**Table 1: Largest Private Sector Employers**

Name	Industry (NAICS Code)	# of Employees (approximate)
Pidherney's Inc.	237110, 2131	
Challand Pipeline Ltd	21311	
Bunch Projects	21311	
WPW Inc	21311	
West Fraser LVL	32121	
Foothills Tank Rentals	21311	

Source: Rocky Mountain House, 2019

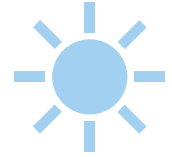
The following table provides the same information for the largest public sector employers located in Rocky Mountain House.

**Table 2: Largest Public Sector Employers**

Name	Industry (NAICS Code)	# of Employees (approximate)
Alberta Health Services	62211	
Wildrose School Division	61111	
Alberta Agriculture & Forestry	91291	
Alberta Environment & Parks	91291	
Clearwater County	91391	
Alberta Health Services	62211	

Source: Rocky Mountain House, 2019

## 2.3 Climate



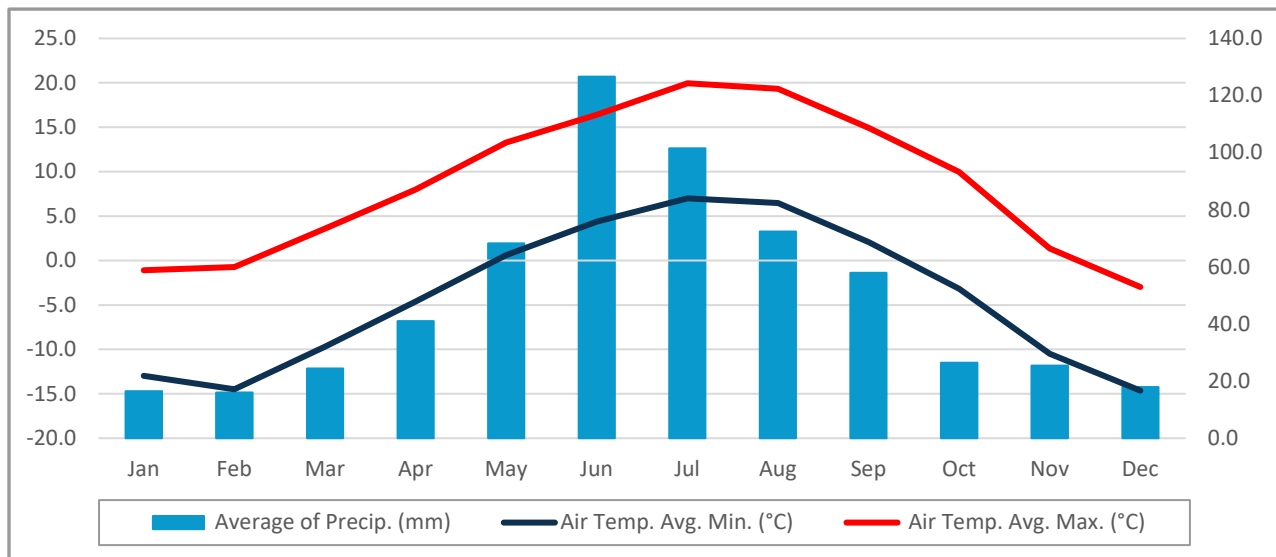
Rocky Mountain House climatic data was retrieved from the Government of Alberta's Agriculture and Forestry Climate Information Services. Table 3 and Figure 2 illustrate average precipitation levels and temperatures.

**Table 3: Average Temperature and Precipitation, 2010-2019**

Temp. (°C)	Jan	Feb	Mar	Apr	May	Jun	Jul	Aug	Sep	Oct	Nov	Dec
Air Temp. Avg. Min. (°C)	-13	-14.5	-9.7	-4.6	0.6	4.4	7.0	6.5	2.1	-3.2	-10.5	-14.6
Air Temp. Avg. Max. (°C)	-1.1	-0.7	3.6	8.0	13.3	16.4	20.0	19.3	14.9	10.0	1.4	-3.0
Average of Precip. (mm)	16.5	16.1	24.4	41.0	68.2	126.6	101.5	72.4	57.9	26.4	25.4	18.0

Source: Government of Alberta: Agriculture and Forestry: Climate Information Services  
<https://agriculture.alberta.ca/acis/township-data-viewer.jsp>

**Figure 2: Temperature and Precipitation Averages, 2010-2019**



Source: Government of Alberta: Agriculture and Forestry: Climate Information Services, Rocky Mountain House  
<https://agriculture.alberta.ca/acis/township-data-viewer.jsp>

## 3. DEMOGRAPHICS



### 3.1 Population Size and Growth

The population of Rocky Mountain House was growing between 1996 and 2011 according to Statistics Canada census. The population shrunk by 3.5% between 2006 and 2016 and projected to continue to decrease over the next 10 years.

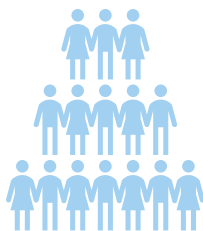
**Table 4: Population Change, 2006 - 2029**

	2006	2011	2016	2019
<b>Rocky Mountain House</b>	6,874	6,933	6,635	6,722
% Change	10.7%	0.9%	-4.3%	1.3%
	2006	2011	2016	2019
<b>Alberta</b>	3,290,350	3,645,257	4,067,175	4,522,106
% Change	10.6%	10.8%	11.6%	11.2%

Source: the 2006 to 2016 data is from Statistics Canada Census and 2019 to 2029 data is from Manifold SuperDemographics. Note that the two sources are not directly comparable since Statistics Canada is based on a survey and Manifold data is based on an estimation method.

### 3.2 Age Profile

Rocky Mountain House has over 65% of the population within working age. Similar to Alberta, nearly 20% of the population in Rocky Mountain House is below the age of 15, making 83% of the population below 65 years old.

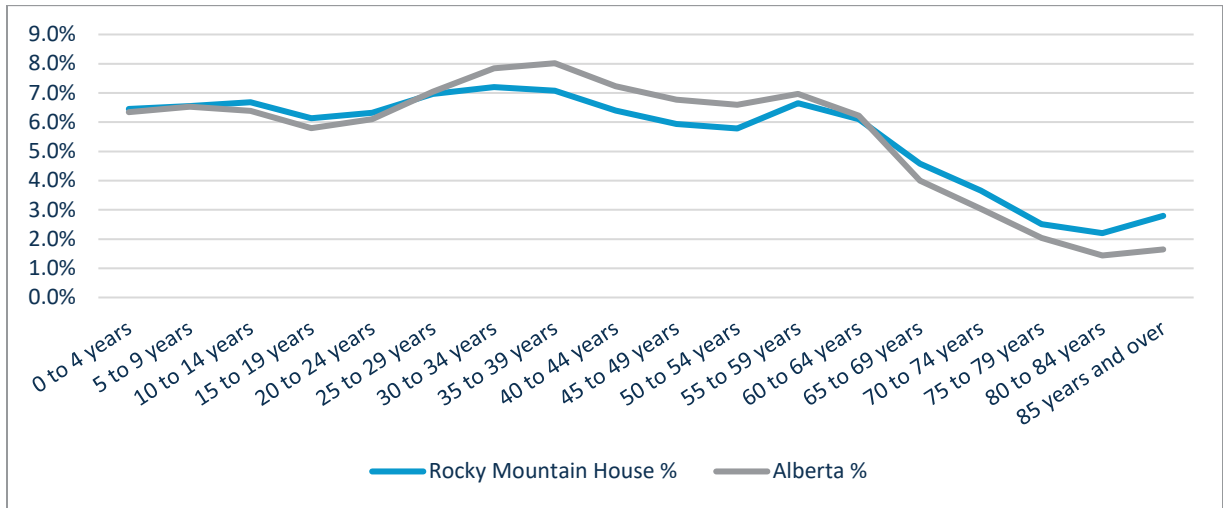


Ages	2019 Age Profile Snapshot	
	Rocky Mountain House	Alberta
0-14	19.7%	19.3%
15-64	64.6%	68.6%
65+	15.8%	12.2%

Figure 3 illustrates Rocky Mountain House's population by age compared to that of Alberta. The town has a higher percentage of people ages 0-24, and a higher percentage of persons ages 65 and older.



**Figure 3: Population by Age Group, Compared to Alberta**



Source: McSweeney & Associates from Manifold Data Mining Inc. SuperDemographics 2019



Table 5 has 2019 population estimates by age group. It compares the percentage of the total population by age group against Alberta. Rocky Mountain House has a slightly older population compared to Alberta as measured by average and median age of the populations.

**Table 5: Age Distribution, 2019**

Characteristics	Rocky Mountain House	Rocky Mountain House %	Alberta
<b>Total Population</b>	<b>6,722</b>	100.0%	<b>4,522,106</b>
0 to 4 years	434	6.5%	6.3%
5 to 9 years	440	6.5%	6.5%
10 to 14 years	449	6.7%	6.4%
15 to 19 years	412	6.1%	5.8%
20 to 24 years	425	6.3%	6.1%
25 to 29 years	468	7.0%	7.0%
30 to 34 years	484	7.2%	7.8%
35 to 39 years	476	7.1%	8.0%
40 to 44 years	430	6.4%	7.2%
45 to 49 years	399	5.9%	6.8%
50 to 54 years	389	5.8%	6.6%
55 to 59 years	447	6.6%	7.0%
60 to 64 years	410	6.1%	6.2%
65 to 69 years	308	4.6%	4.0%
70 to 74 years	246	3.7%	3.0%
75 to 79 years	169	2.5%	2.0%
80 to 84 years	148	2.2%	1.4%
85 years and over	188	2.8%	1.6%
<b>Median age of total population</b>	<b>37.61</b>		<b>37.47</b>
<b>Average age of total population</b>	<b>39.13</b>		<b>38.12</b>

Source: McSweeney & Associates from Manifold Data Mining Inc. SuperDemographics 2019.

### 3.3 Income, Households and Attainability

Table 6 shows the breakdown of total individual incomes in 2019<sup>1</sup>. More than 40% of the population has an individual income higher than \$50,000, which is similar to the percentage of the population in the province (44%) with total individual income above \$50,000.



**Table 6: Total Individual Income Levels, 2019**

Characteristic	Rocky Mountain House	Rocky Mountain House	Alberta
Total population 15 years and over	5,399	100.0%	3,650,941
Without total income	188	3.5%	4.8%
With total income	5,211	96.5%	95.2%
Under \$10,000 (including loss)	563	10.4%	8.9%
\$10,000 to \$19,999	666	12.3%	11.7%
\$20,000 to \$29,999	750	13.9%	11.6%
\$30,000 to \$39,999	570	10.6%	10.0%
\$40,000 to \$49,999	465	8.6%	9.1%
\$50,000 to \$59,999	385	7.1%	8.1%
\$60,000 to \$69,999	333	6.2%	6.8%
\$70,000 to \$79,999	308	5.7%	5.6%
\$80,000 to \$89,999	229	4.2%	4.5%
\$90,000 to \$99,999	210	3.9%	3.8%
\$100,000 and over	732	13.6%	15.1%
\$100,000 to \$149,999	379	7.0%	6.8%
\$150,000 and over	353	6.5%	8.3%
<b>Characteristic</b>	<b>Rocky Mountain House</b>		<b>Alberta</b>
Median total income \$	\$48,283		\$49,584
Average total income \$	\$73,529		\$75,171

Source: McSweeney & Associates from Manifold Data Mining Inc. SuperDemographics 2019 \*(2018 incomes).

<sup>1</sup> Please note that the 2019 Manifold data uses 2018 income data, as it is the most recent information available.



# Rocky Mountain House 2020 Community Profile

Table 7 summarizes the 2018 employment income statistics for Rocky Mountain House and Alberta. The following key findings can be extracted from this table:

- Rocky Mountain House has a higher median employment income (by 0.3%) than Alberta.
- Average employment income in Rocky Mountain House is 8.3 % lower than in Alberta.
- On average, males in Rocky Mountain House have employment incomes 107% higher than females. In comparison, Alberta males earn, on average, incomes that are 71% higher than females.

**Table 7: Employment Income Levels, 2018**

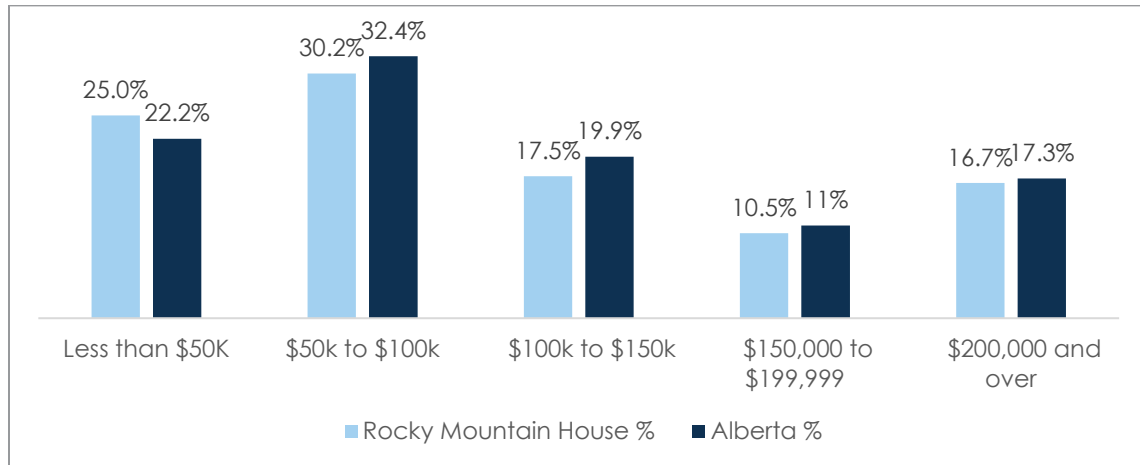
Employment income of population aged 15+:	Rocky Mountain House			Alberta		
	Male	Female	Total	Male	Female	Total
Median	\$71,881	\$33,021	\$48,325	\$60,779	\$ 37,355	\$48,190
Average	\$83,908	\$40,559	\$63,643	\$86,180	\$50,383	\$69,431

Source: McSweeney & Associates from Manifold Data Mining Inc. SuperDemographics 2019 (2018 incomes).



Lastly, we look at household income and household attainability.

**Figure 4: Household Income Levels, 2019**



Source: McSweeney & Associates from Manifold Data Mining Inc. SuperDemographics 2019 (2018 incomes).

On average, the residents of Rocky Mountain House have lower levels of employment and household income relative to the provincial figures. However, Rocky Mountain House offers residents a lower average price for homes. Furthermore, a similar percentage of the population, compared to the rest of Alberta, spends 30% or more of household income on shelter costs, which indicates a similar level of attainability (Table 8).

**Table 8: Households and Dwelling Attainability, 2018**

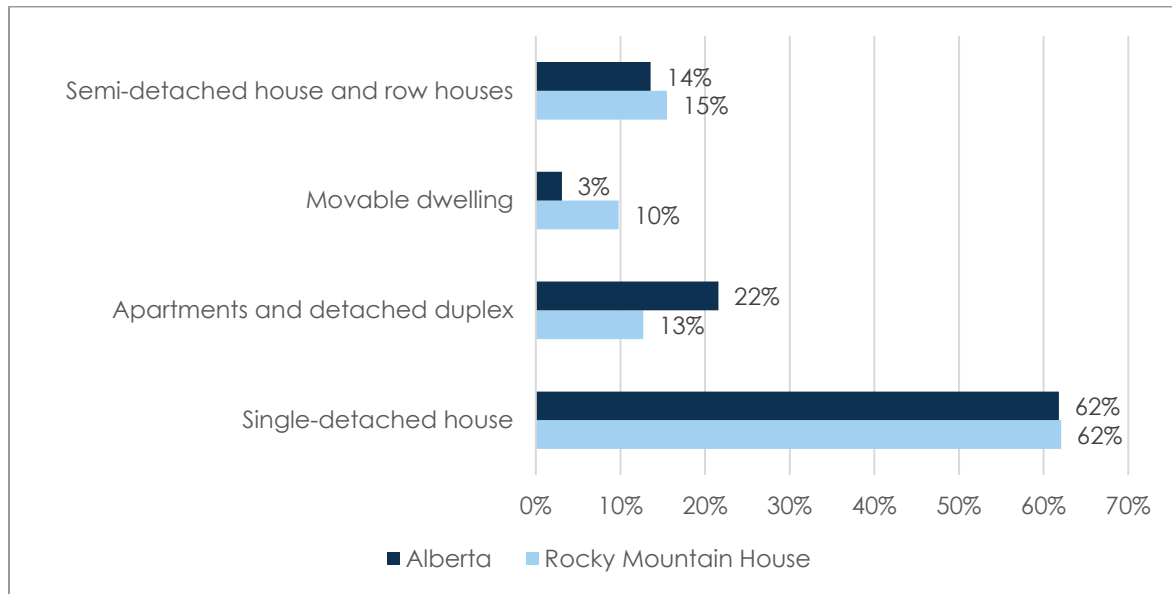
Housing Characteristics	Rocky Mountain House	Alberta
Total number of private households	2,673	1,680,258
Average value of dwelling \$	\$391,303	\$574,171
Median value of dwellings (\$)	\$410,379	\$502,293
Owned	73%	72%
Rented	27%	27%
Median monthly shelter costs for rented dwellings	\$1,393	\$1,298
Average monthly shelter costs for rented dwellings	\$1,584	\$1,399
Spending 30% or more of household total income on shelter costs	21%	21%

Source: McSweeney & Associates from Manifold Data Mining Inc. SuperDemographics. 2019



In terms of **housing stock**, Rocky Mountain House has a well diversified housing stock, comparable to that in the province. The total supply of apartments and detached duplexes is slightly lower than in Alberta but there are more semi-detached/row homes and moveable dwellings available (see Figure 5).

**Figure 5: Occupied Dwellings by Structure Type, 2019**



Source: McSweeney & Associates from Manifold Data Mining Inc. SuperDemographics, 2019



## 3.4 Mobility Characteristics

Mobility characteristics refers to the status of a person with regards to the place of residence. Residents in Rocky Mountain House are less likely to change place of residence within one year, compared to the rest of the province. Rocky Mountain House had more migrant movers over the past year and 5 years, compared to the province. Estimates indicate that migrant movers that move to Rocky Mountain House tend to be relocating from within the province rather than outside of Alberta or Canada (Table 9). See footnotes for definitions.



**Table 9: Mobility Rates, 2019**

Mobility status – place of residence status 1 years ago			
	Rocky	Rocky	Alberta
<b>Total population</b>	6,616	100.0%	100.0%
Non-movers <sup>2</sup>	5,649	85%	84.3%
Movers <sup>3</sup>	966	15%	15.7%
Non-migrants <sup>4</sup>	542	8%	10.2%
Migrants <sup>5</sup>	424	6%	5.5%
Internal migrants	379	6%	4.4%
Intra-provincial migrants	313	5%	3.2%
Interprovincial migrants	66	1%	1.2%
External migrants	45	1%	1.2%
Mobility status – place of residence status 5 years ago			
<b>Total population</b>	6,270	95%	94.7%
Non-movers	3,228	49%	51.8%
Movers	3,042	46%	42.8%
Non-migrants	1,565	24%	23.1%
Migrants	1,477	22%	19.7%
Internal migrants	1,310	20%	14.5%
Intra-provincial migrants	1,003	15%	8.6%
Interprovincial migrants	307	5%	5.8%
External migrants	168	3%	5.2%

Source: McSweeney & Associates from Manifold Data Mining Inc. SuperDemographics 2019.

<sup>2</sup> Non-movers are persons who, on Census Day, were living at the same address as the one at which they resided one year earlier.

<sup>3</sup> Movers are persons who, on Census Day, were living at a different address from the one at which they resided one year earlier.

<sup>4</sup> Non-migrants are movers who, on Census Day, were living at a different address, but in the same census subdivision (CSD) as the one they lived in one year earlier.

<sup>5</sup> Migrants are movers who, on Census Day, were residing in a different CSD one year earlier (internal migrants) or who were living outside Canada one year earlier (external migrants).



## 3.5 Language Characteristics

Table 10 indicates knowledge of Canada's official languages. More than 99% of residents in Rocky Mountain House speak English, which is above the provincial figure. Only 0.3% of the population speaks neither official language (versus 1.5% in Alberta).



**Table 10: Knowledge of Official Languages, 2019**

Characteristics	Rocky Mountain House	Rocky Mountain House	Alberta
<b>Total population</b>	6,722	100.0%	100.0%
English only	6,400	95.2%	91.8%
French only	10	0.1%	0.1%
English and French	292	4.3%	6.6%
Neither English nor French	21	0.3%	1.5%

Source: McSweeney & Associates from Manifold Data Mining Inc. SuperDemographics 2019.

Moreover, Table 11 illustrates the most common languages outside of the official languages of Canada.

**Table 11: Most Common Non-Official Languages Spoken, 2019**

Characteristics	Rocky Mountain House	Rocky Mountain House %
<b>Non-official languages</b>	400	100%
Tagalog (Pilipino, Filipino)	128	32%
Dutch	43	11%
Chinese languages	25	6%
Cree-Montagnais languages	20	5%
German	20	5%
Hindi	15	4%
Punjabi (Panjabi)	15	4%
Urdu	15	4%
Ojibway-Potawatomi languages	10	3%

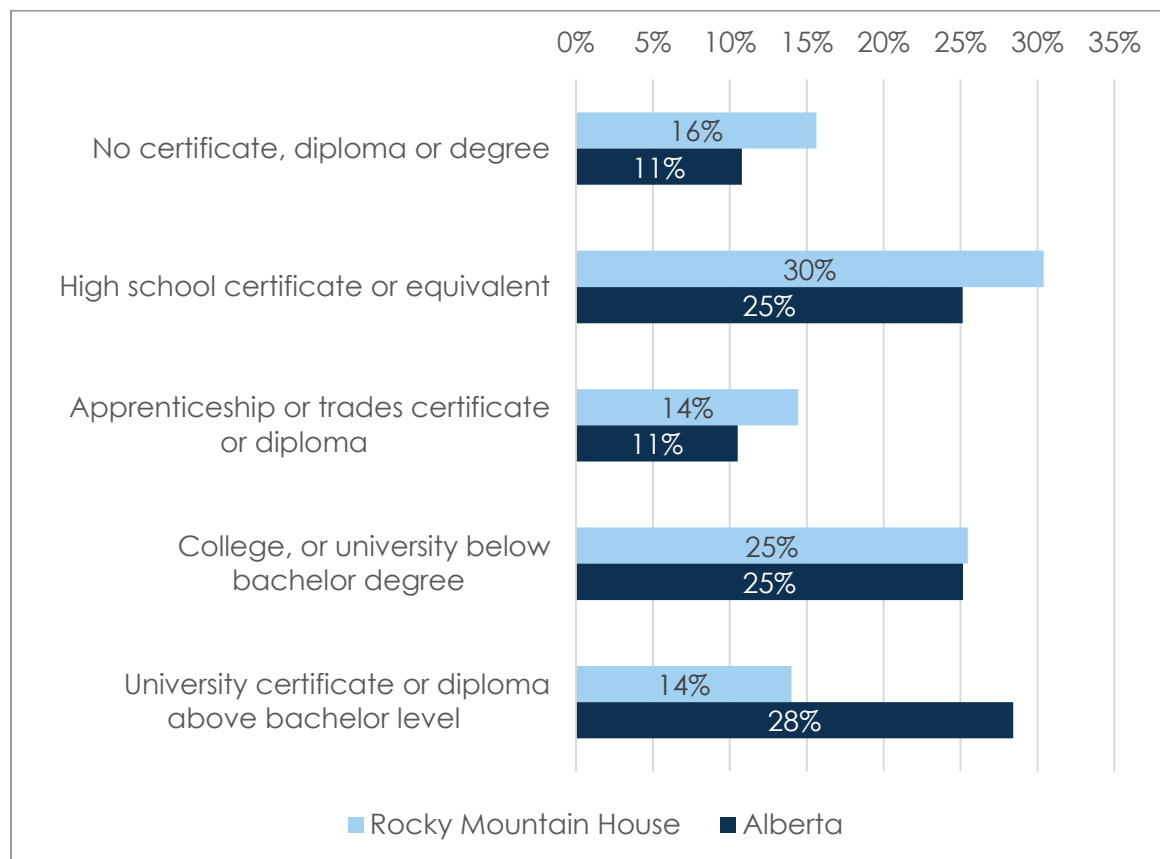
Source: McSweeney & Associates from Manifold Data Mining Inc. SuperDemographics 2019.

## 3.6 Level of Education

Figure 6 and Table 12 illustrate educational attainment for residents ages 25 to 64. Approximately, 30% completed only high school, while 54% reached post-secondary education. University level was reached by 14% of the population, 11% of which corresponds to education at the Bachelor level.



**Figure 6: Educational Attainment, Age Group 25-64, 2019**



Source: McSweeney & Associates from Manifold Data Mining Inc. SuperDemographics 2019.

**Table 12: Educational Attainment<sup>6</sup>, 2019**

Characteristics	Rocky Mountain House	Rocky Mountain House	Alberta
Total population 25 to 64 years	<b>3,503</b>	<b>100.0%</b>	<b>2,563,539</b>
No certificate, diploma or degree	548	16%	10.8%
Secondary (high) school diploma or equivalency certificate	1,065	30%	25.1%
Postsecondary certificate, diploma or degree	1,890	54%	64.1%
Apprenticeship or trades certificate or diploma	506	14%	10.5%
Trades certificate or diploma other than Certificate of Apprenticeship or Certificate of Qualification	159	5%	3.0%
Certificate of Apprenticeship or Qualification	347	10%	7.5%
College, CEGEP or other non-university certificate or diploma	793	23%	21.9%
University certificate or diploma below bachelor level	99	3%	3.2%
University degree at Bachelor level or above	491	14%	28.4%
Bachelor's degree	394	11%	20.2%
University certificate or diploma above bachelor level	31	1%	1.4%

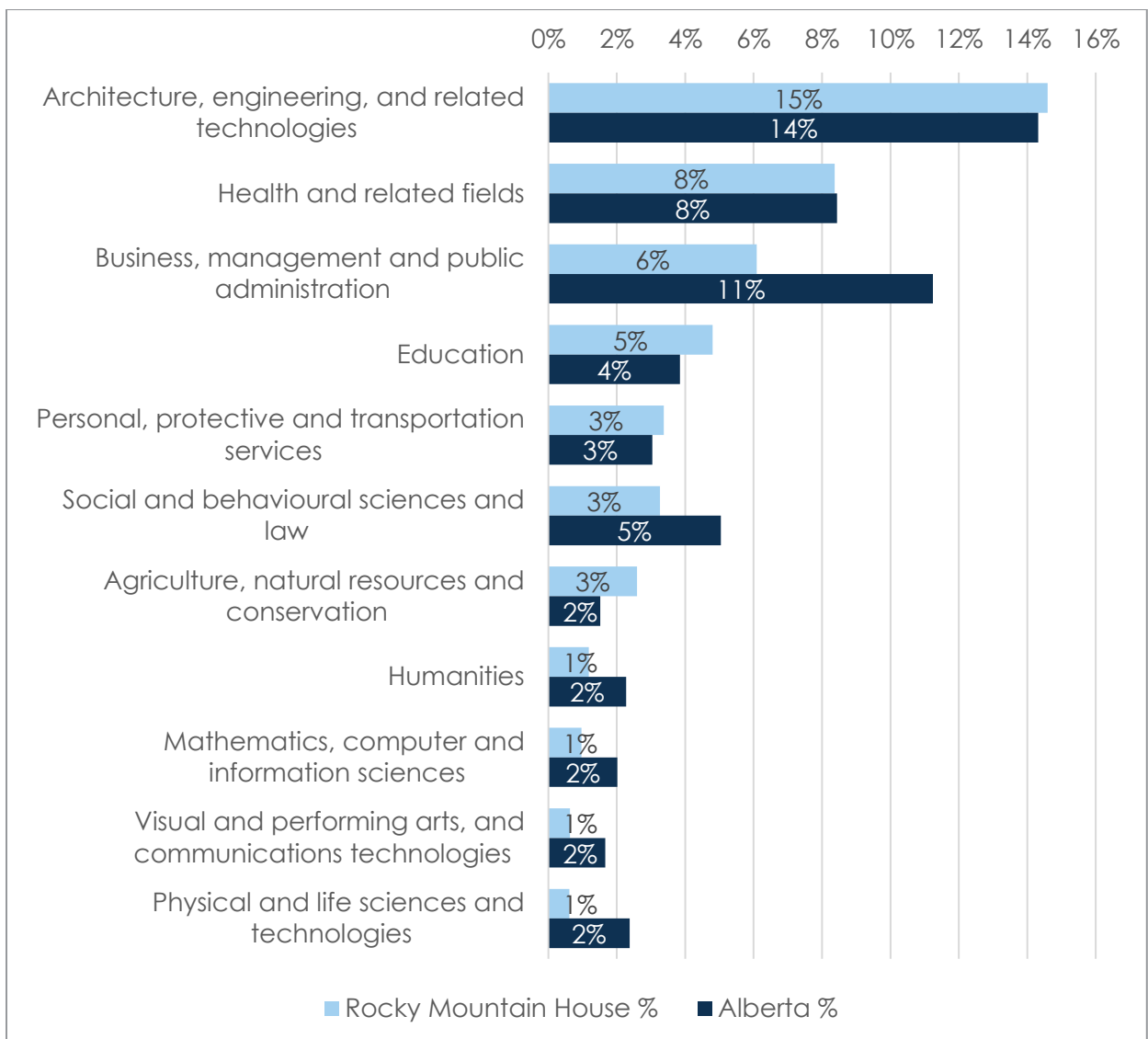
Source: McSweeney & Associates from Manifold Data Mining Inc. SuperDemographics 2019.

<sup>6</sup> By highest certificate, diploma or degree obtained may not add up to 100% due to nested categories

Major fields of study are coded based on the Classification of Instructional Programs (CIP) 2016, for the population aged 15 years and over in private households. It is collected for the highest certificate, diploma or degree above the high school or secondary school level.

Figure 7 illustrates the major fields of study of residents ages 15 years and older. 'Architecture, engineering and related technologies' is the most prominent field of study, with higher uptake in this field compared to the province.

**Figure 7: Major Field of Study, Population Aged 15 Years or Older, 2019**



Source: McSweeney & Associates from Manifold Data Mining Inc. SuperDemographics 2019.





# Rocky Mountain House 2020 Community Profile

The following table breaks down the major fields of study into more specific programs and it clearly shows where there is a high and low supply in skills.

**Table 13: Major Field of Study, Population Aged 15 Years or Older, 2019**

Description	Total
Total population aged 15 years and over in private households.	5,399
No postsecondary certificate, diploma or degree	2,890
51. Health professions and related programs	400
52. Business, management, marketing and related support services	311
13. Education	259
46. Construction trades	250
47. Mechanic and repair technologies/technicians	248
48. Precision production	140
12. Personal and culinary services	139
15. Engineering technologies and engineering-related fields	118
03. Natural resources and conservation	96
19. Family and consumer sciences/human sciences	82
01. Agriculture, agriculture operations and related sciences	44
31. Parks, recreation, leisure and fitness studies	43
39. Theology and religious vocations	42
50. Visual and performing arts	33
22. Legal professions and studies	26
25. Library science	24
14. Engineering	23
45. Social sciences	22
43. Security and protective services	22
42. Psychology	21
49. Transportation and materials moving	20
44. Public administration and social service professions	19
11. Computer and information sciences and support services	18
09. Communication, journalism and related programs	16
30.01 Biological and physical sciences	15
54. History	11
41. Science technologies/technicians	10
27. Mathematics and statistics	10
05. Area, ethnic, cultural, gender, and group studies	9
04. Architecture and related services	9
60. Dental, medical and veterinary residency programs	9
24. Liberal arts and sciences, general studies and humanities	5
26. Biological and biomedical sciences	4
23. English language and literature/letters	3
40. Physical sciences	3
10. Communications technologies/technicians and support services	2

Source: McSweeney & Associates from Manifold Data Mining Inc. SuperDemographics 2019

## 4. LABOUR FORCE

### 4.1 Key Indicators

Rocky Mountain House is home to a labour force of 3,821 persons strong. As shown in Table 14, the participation and employment rates are below that of Alberta. The unemployment rate is higher than that of the province.



**Table 14: Labour Force Characteristics, 2019**

Characteristic	Rocky Mountain House	Alberta
Total population 15 years and over	5,399	3,650,941
In the labour force	3,821	2,621,208
Employed	3,455	2,435,085
Unemployed:	367	186,123
Not in the labour force	1,578	1,029,732
<b>Participation rate (%)</b>	70.8	71.8
<b>Employment rate (%)</b>	64.0	66.7
<b>Unemployment rate (%)</b>	9.6	7.1

Source: McSweeney & Associates from Manifold Data Mining Inc. SuperDemographics 2019.

Using a gender and age filter to view the labour force (Table 15) shows that males (ages 25 and older), are driving unemployment. This breakdown also shows that females, particularly those 25 and older, are the most underutilized labour groups (lowest participation rate).

**Table 15: Labour Force Characteristics by Age and Gender, 2019**

	Population 15 to 24 years old:					
	Rocky Mountain House			Alberta		
	Total	Male	Female	Total	Male	Female
Participation rate (%)	74.44	76.51	72.31	65.6	65.7	65.5
Employment rate (%)	66.1	67.64	64.53	57.5	56.5	58.6
Unemployment rate (%)	11.19	11.59	10.76	12.3	14.0	10.5
	Population 25 years and over:					
	Rocky Mountain House			Alberta		
	Total	Male	Female	Total	Male	Female
Participation rate (%)	70.1	78	63.15	72.9	78.8	67.1
Employment rate (%)	63.59	68.18	59.56	68.3	73.9	62.8
Unemployment rate (%)	9.28	12.59	5.7	6.3	6.2	6.4

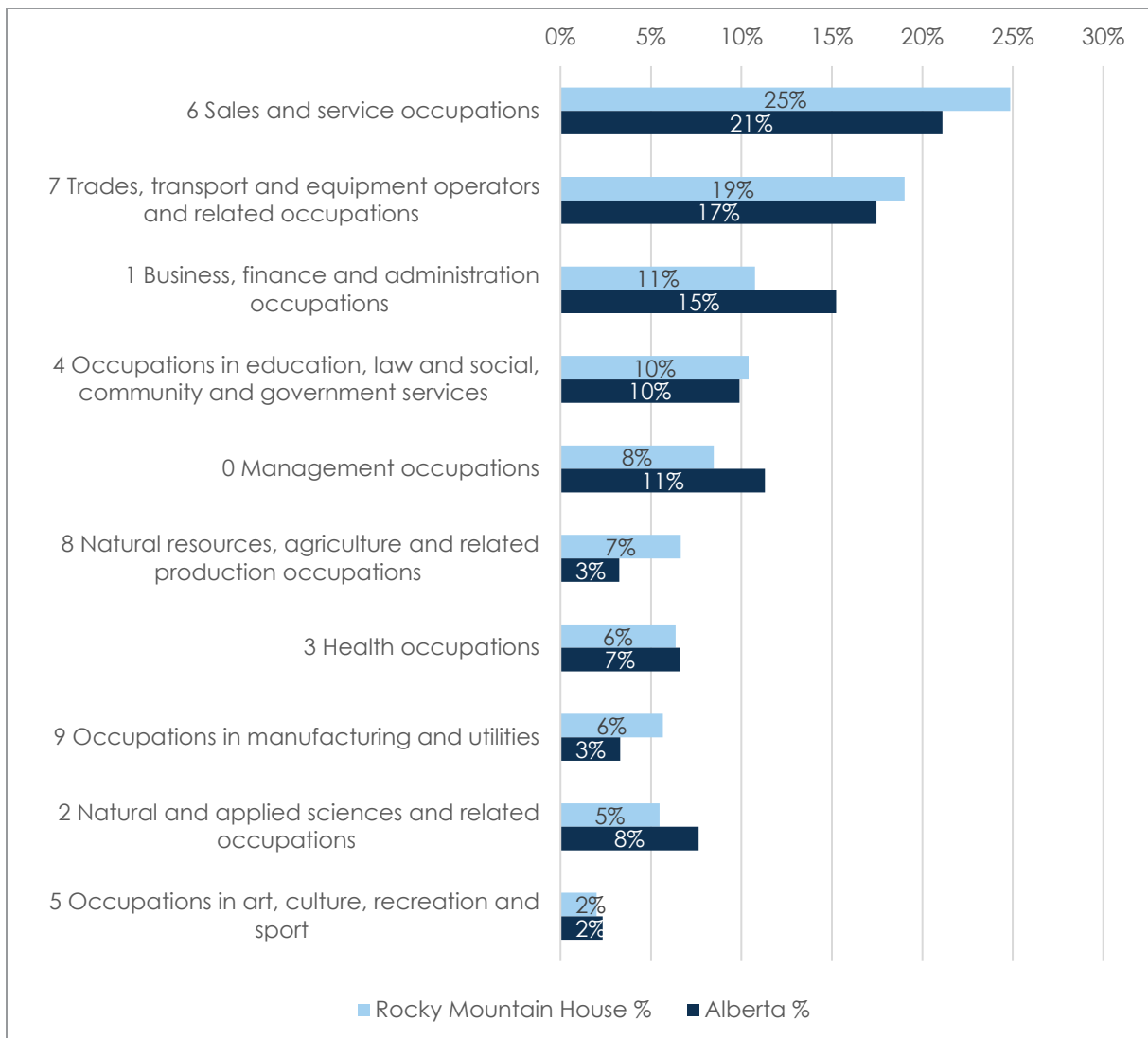
Source: McSweeney & Associates from Manifold Data Mining Inc. SuperDemographics 2019.

## 4.2 Labour Force by Occupation



Occupations refer to the kind of work performed by persons aged 15 years and over as determined by their kind of work and the description of the main activities in their job. The occupation data are produced according to the National Occupation Classification<sup>7</sup> system.

**Figure 8: Labour Force by Occupation by 1-digit NOCS Code, 2019**



Source: McSweeney & Associates from Manifold Data Mining Inc. SuperDemographics 2019.

<sup>10</sup>Occupation data are produced according to the NOC 2016:  
<http://noc.esdc.gc.ca/English/noc/welcome.aspx?ver=16>

## 4.3 Labour Force by Industry

The total labour force population, aged 15 years and over, can be classified by Industry based on the North American Industry Classification System (NAICS) <sup>8</sup>

Labour force by industry data shows the largest percentage of the labour force is employed in retail trade (13%), mining, quarrying, and oil and gas extraction (12%), and Construction (11%) industries.



**Table 16: Labour Force by Industry, 2019**

Characteristic	Rocky Mountain House	Rocky Mountain House	Alberta
Total labour force 15 years and over	3,821	100%	100.0%
Industry - not applicable	23	1%	2%
All industries	3,798	99%	98%
44-45 Retail trade	478	13%	11%
21 Mining, quarrying, and oil and gas	462	12%	6%
23 Construction	410	11%	10%
62 Health care and social assistance	388	10%	10%
72 Accommodation and food services	380	10%	7%
61 Educational services	233	6%	6%
81 Other services (except public	228	6%	5%
91 Public administration	175	5%	5%
31-33 Manufacturing	174	5%	5%
54 Professional, scientific and technical	140	4%	7%
11 Agriculture, forestry, fishing and hunting	133	3%	3%
48-49 Transportation and warehousing	109	3%	5%
52 Finance and insurance	105	3%	3%
41 Wholesale trade	94	2%	4%
56 Administrative and support, waste	90	2%	4%
22 Utilities	77	2%	1%
71 Arts, entertainment and recreation	68	2%	2%
53 Real estate and rental and leasing	46	1%	2%
51 Information and cultural industries	10	0%	2%
55 Management of companies & enterprises	-	0%	0%

Source: McSweeney & Associates from Manifold Data Mining Inc. SuperDemographics 2019.

<sup>8</sup> North American Industry Classification System 2012:  
<http://www23.statcan.gc.ca/imdb/p3VD.pl?Function=getVD&TVD=118464>



## 4.4 General Wages by Occupation

Below is a list of the highest-paying occupations in Rocky Mountain House for 2019.



**Table 17: General Wages by Occupation**

Description	2018 Avg. Hourly Wages	2018 Median Hourly Wages	2018 Median Wages
Central control and process operators, petroleum, gas and chemical processing	\$44.13	\$43.53	\$90,535.82
Registered nurses and registered psychiatric nurses	\$40.30	\$42.07	\$87,504.91
Contractors and supervisors, oil and gas drilling and services	\$41.77	\$40.22	\$83,659.88
Steamfitters, pipefitters and sprinkler system installers	\$39.33	\$39.75	\$82,678.02
Contractors and supervisors, heavy equipment operator crews	\$40.58	\$38.61	\$80,309.59
Construction millwrights and industrial mechanics	\$39.21	\$38.21	\$79,477.32
Inspectors in public and environmental health and occupational health and safety	\$40.59	\$37.96	\$78,966.27
Heavy-duty equipment mechanics	\$37.57	\$37.29	\$77,556.88
Retail and wholesale trade managers	\$37.94	\$35.94	\$74,759.41
Elementary school and kindergarten teachers	\$34.90	\$35.64	\$74,120.85
Secondary and elementary school teachers and educational counsellors, n.e.c.	\$34.85	\$35.38	\$73,599.38
Oil and gas well drillers, servicers, testers and related workers	\$37.42	\$34.57	\$71,906.81
Paramedical occupations	\$34.00	\$32.90	\$68,437.88
Heavy equipment operators (except crane)	\$31.26	\$31.27	\$65,031.28
Welders and related machine operators	\$32.41	\$31.07	\$64,623.98
Oil and gas well drilling and related workers and services operators	\$32.30	\$30.58	\$63,613.05
Transport truck drivers	\$30.94	\$29.26	\$60,870.44
Carpenters	\$29.81	\$28.40	\$59,081.23
Administrative officers	\$29.35	\$27.11	\$56,381.25
Oil and gas drilling, servicing and related labourers	\$28.01	\$26.39	\$54,886.09
General office support workers	\$26.71	\$25.89	\$53,844.51
Accounting technicians and bookkeepers	\$27.35	\$25.33	\$52,679.39
Social and community service workers	\$26.39	\$24.16	\$50,261.12
Material handlers	\$27.04	\$23.49	\$48,865.26
Accounting and related clerks	\$24.06	\$23.33	\$48,531.96
Administrative assistants	\$23.83	\$23.18	\$48,208.91
Elementary and secondary school teacher assistants	\$25.50	\$23.10	\$48,049.17
Professional occupations in religion	\$23.84	\$22.78	\$47,379.09
Nurse aides, orderlies and patient service associates	\$23.90	\$22.69	\$47,203.35
Retail sales supervisors	\$23.66	\$22.00	\$45,763.65
Construction trades helpers and labourers	\$23.49	\$21.30	\$44,313.50



# Rocky Mountain House 2020 Community Profile

Description	2018 Avg. Hourly Wages	2018 Median Hourly Wages	2018 Median Wages
Agricultural service contractors, farm supervisors and specialized livestock workers	\$25.32	\$21.16	\$44,021.25
General farm workers	\$22.22	\$20.03	\$41,658.32
Receptionists	\$20.61	\$19.44	\$40,445.56
Landscaping and grounds maintenance labourers	\$22.14	\$19.22	\$39,976.72
Janitors, caretakers and building superintendents	\$20.33	\$19.14	\$39,808.67
Early childhood educators and assistants	\$21.18	\$18.50	\$38,477.53
Cooks	\$18.83	\$17.23	\$35,845.47
Light duty cleaners	\$16.24	\$15.48	\$32,194.06
Retail salespersons	\$17.40	\$15.24	\$31,694.20
Food counter attendants, kitchen helpers and related support occupations	\$15.29	\$13.83	\$28,770.11
Cashiers	\$15.00	\$13.59	\$28,274.33

Source: EMSI 2019.Q1



## 4.5 Place of Work



Tables 19 and 20 provide information on persons reporting a “usual place of work other than in their home or outside of Canada”, and reveals the following regarding labour force commuting:

- Only 5% of the Rocky Mountain House labour force works outside of the community. Most residents that work outside the community commute to the Clearwater County of City of Red Deer.
- About half (53%) of the persons working in the town are not residents of Rocky Mountain House.
- Most of the non-residents working in Rocky Mountain House are from Clearwater County, City of Red Deer, and Sylvan lake

**Table 18: Where Rocky Mountain House Resident Labour Force Works, 2016**

Place of Work	Total	Male	Female
Rocky Mountain House, T	2,160	935	1,225
Clearwater County, MD	50	25	25
Red Deer, CY	40	25	20
Wood Buffalo, SM	25	25	0
<b>Total workforce residing in Rocky Mountain House</b>	<b>2,275</b>	<b>1010</b>	<b>1270</b>
Total resident labour force with a usual place of work outside the Town	115	75	45
Percent of residents declaring a place of work outside of the Town	5%	7%	4%

Source: Statistics Canada, 2016 Census of Population, Statistics Canada Catalogue no. 98-400-X2016325.

**Table 19: Place of Residence for Workers in Rocky Mountain House, 2016**

Place of Residence	Total	Male	Female
Rocky Mountain House, T	2,160	935	1,225
Clearwater County, MD	2,065	900	1,165
Red Deer, CY	85	55	30
Sylvan Lake, T	80	30	50
Lacombe County, MD	65	30	30
Caroline, VL	50	15	40
Calgary, CY	45	35	15
Red Deer County, MD	35	10	25
Edmonton, CY	25	20	10
<b>Total workforce working in the Town</b>	<b>4,610</b>	<b>2030</b>	<b>2590</b>
Total non-resident workforce commuting to work to the Town	2,450	1,095	1,365
Percent of workers (non-residents) commuting to work in the Town	53%	54%	53%

Source: Statistics Canada, 2016 Census of Population, Statistics Canada Catalogue no. 98-400-X2016325.





## 5. TRANSPORTATION AND SHIPPING

### 5.1 Highways



Rocky Mountain House is located 82 kilometres west of Red Deer, along Highway 11, which connects to Highway 2 – the main north-south highway in Alberta. Highway 2 provides access to both the southern border, as well as western Alberta, the Canamex Trade Corridor and British Columbia and its tidewater, linking Canada to East Asia markets. Rocky Mountain House is near 2 international airports – Edmonton International Airport, and Calgary International Airport, both approximately a 2 hour drive away.

#### Average Annual Daily Traffic (AADT) Counts 2018:

<p><b>Highway 22:</b> From HWY 11 to HWY 598 Distance (km): 3.5 km Weighted Annual Average Daily Traffic (AADT): 7,200</p>	<p><b>Highway 11A:</b> From HWY 756 to HWY 22 Distance (km): 5.5 km Weighted Annual Average Daily Traffic (AADT): 3,600</p>
	<p><b>Highway 22:</b> From HWY 13 to HWY 53 Distance (km): 27 km Weighted Annual Average Daily Traffic (AADT): 1,810</p>

Source: <http://www.transportation.alberta.ca/mapping/>

The Town includes, within its borders, Highway 11. Highway 2 is the main north-south highway in Alberta, connecting the county to various urban centres, and border crossings as specified below:

**Table 20: Distance to Major Urban Centres**

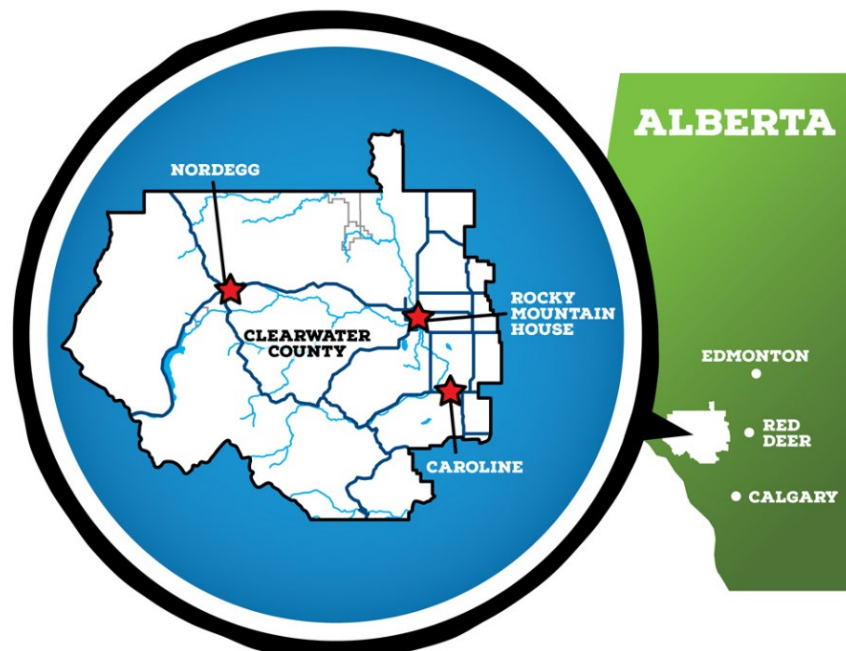
Distance to Major Urban Centres		
Location	Distance (km)	Distance (miles)
Red Deer	82	51
Calgary	213	132
Edmonton	215	134
Lethbridge	423	263
Medicine Hat	488	303
Fort McMurray	655	407

Source: McSweeney & Associates from Google Maps

**Table 21: Distance to Major US Border Crossings**

Distance to Major US Border Crossings		
Border Crossing	Distance (km)	Distance (miles)
Carway (Hwy 2)	464	288
Del Bonita (Hwy 2)	492	306
Sweetgrass (Hwy 4)	525	326
Aden (Hwy 1)	604	375

Source: McSweeney & Associates from Google Maps



## 5.2 Rail Services

The nearest commercial rail services are Edmonton and Calgary, which are serviced by both CN Rail and Canadian Pacific.



### VIA Rail

The closest VIA Rail station is in the City of Edmonton.  
<https://www.viarail.ca/en>

### CN Rail

CN Rail runs east and west in the eastern part of Rocky Mountain House. Near Red Deer it connects with main lines going north and south or further east. While there is no official station, there are companies along the line in the county that have drop-off and loading docks. CN provides shippers with more options and greater reach in the rapidly expanding market for north-south trade.

#### Closest CN Intermodal Station (with speed gate)

Edmonton, AB  
 12311 – 184th Street NW, T5V 1T3  
 Phone: 1-866-896-6601  
 Port Code: 702  
 Mon-Sun: 24 hours daily

### Canadian Pacific

CP has numerous routing options across Canada and through the U.S. as well as excellent North American reach through gateways with all Class I railways. CP has extensive Canadian and U.S. short line partners and serves to lead Atlantic and Pacific port facilities.

<b>Canadian Head Office:</b> Canadian Pacific 7550 Ogden Dale Road S.E. Calgary, AB T2C 4X9 Canada 1-888-333-6370	<b>Closest Transload Facility:</b> Edmonton TFR 6040 - 99 Street N.W. Edmonton, AB Phone: 403-319-6476	<b>Closest Intermodal Facility:</b> Edmonton Intermodal Terminal 10155 – 39 Ave NW Edmonton, AB Phone: 1-888-333-8111
--	--	--

## 5.3 Airports

Rocky Mountain House has access to two international airports within 1.5 hours' drive time: Edmonton International Airport and Calgary International Airport. The regional airports that serve Rocky Mountain House are listed below.



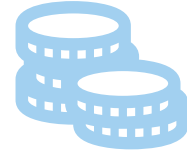
**Table 22: Regional Airports**

Name	Location
Edmonton International Airport	Address: 1000 Airport Rd, Edmonton International Airport, AB T9E 0V3 Code: YEG Elevation: 723 m Phone: (780) 890-8900
Calgary International Airport	Address: 2000 Airport Rd NE, Calgary, AB T2E 6W5 Code: YYC Elevation: 1,084 m Phone: (403) 735-1200
Rocky Mountain House Airport	Address: Clearwater County Code YRM Elevation 988 m Phone: 403 845 4742
Red Deer Airport	Address: 3801 Airport Dr, Springbrook, AB T4S 2E8 Code: YQF Elevation: 905 m Phone: (403) 886-4388

Source: McSweeney & Associates from Google Maps

## 6. TAXES AND UTILITIES

This section describes the taxes (local, provincial and federal), cost of water and sewer connections, waste management sites, and natural gas and electricity rates.



### 6.1 Local Property Tax Rates

**Table 23: Local Property Tax Rates, 2019**

Combined Local Tax Rates 2019 – Combined (Town, County and Education)	Total
Residential/Farmland	1.16%
Commercial Vacant	1.81%
Commercial Improved	1.51%
Non-Res Large Business	1.81%
Non-Res Large Business - Industrial & Linear	1.82%
Machinery & Equipment - Large Business	1.43%

Source: <http://www.rockymtnhouse.com/index.aspx?nid=157>

### 6.2 Federal and Provincial Income Tax Rates

**Table 24: Corporate Taxes – General Corporation (2019 – 2020)**

Combined Federal and Provincial – Non-Canadian Controlled	2019	2020
General/Manufacturing and Processing/Investment	25.0%	25.0%
General; Active Business Income	26.5%	26.5%

Source: McSweeney & Associates from <https://home.kpmg/content/dam/kpmg/ca/pdf/2019/04/substantively-enacted-income-tax-rates-for-gen-corp-for-2019-and-beyond.pdf>



**Table 25: Corporate Taxes – Canadian Controlled (2019 – 2020)**

Combined Federal and Provincial - Canadian Controlled	2019	2020
Small Business Income (less than \$500,000)	11.0%	11.0%
General; Active Business Income	27.0%	27.0%
Manufacturing and Processing/Investment	25.0%	25.0%

Source: McSweeney & Associates from <https://home.kpmg/content/dam/kpmg/ca/pdf/2019/04/substantively-enacted-income-tax-rates-for-ccpc-for-2019-and-beyond.pdf>

**Table 26: Sales Tax, Alberta**

Sales Tax	2019
Federal GST (sales tax)	5%
Provincial GST (sales tax)	0%

Source: <https://www.taxtips.ca/salestaxes/sales-tax-rates-2019.htm>

**Table 27: Personal Income Tax, 2017-2018**

Tax Rate	Tax Bracket (2017)	Tax Bracket (2018)
10%	Up to \$126,625	Up to \$128,145
12%	\$126,625.01 to \$151,950	\$128,145.01 to \$153,773
13%	\$151,950.01 to \$202,600	\$153,773.01 to \$205,031
14%	\$202,600.01 to \$303,900	\$205,031.01 to \$307,547
15%	\$303,900.01 and up	\$307,547.01 and up

Source Government of Alberta: <https://www.alberta.ca/personal-income-tax.aspx>

## 6.3 Water/Wastewater and Waste Management

**Table 28: Water and Sanitary Water Rates**

Charge	Water Rates		
	Metered	Unmetered	Bulk Water System
Monthly base rate	\$29.75	\$85.00	\$15.00
Consumption rate m <sup>3</sup>	\$1.64		\$5.25
After hours call-out			\$100.00
Reconnection fee and service calls (per occurrence):			
1. Regular business houses (\$50.00)			
2. Non-business hours (\$100.00)			
3. Testing Meter (\$200.00)			
Charge	Sanitary Water Rates		
	Metered	Unmetered	Bulk Sanitary System
Monthly base rate	\$14.15	\$37.40	\$15.00
Consumption rate m <sup>3</sup>	\$1.5		\$5.25
After hours call-out			\$100.00
Reconnection fee and service calls (per occurrence):			
1. Regular business houses (\$50.00)			
2. Non-business hours (\$100.00)			
3. Septage Disposal Charge m <sup>3</sup> (\$15.00)			

Source: <https://www.rockymtnhouse.com/DocumentCenter/View/1956>  
<https://www.rockymtnhouse.com/DocumentCenter/View/1956>

The Town is serviced by the City of Red Deer Waste Management Facility for landfill services. The following table provides hours of operation and tipping fees for the landfill.



**Table 29: Landfill and Tipping Fees**

Waste Management 2019	
Landfill	
<b>Site, Address and Contact</b>	Rocky Regional Landfill 5313 44 Street Rocky Mountain House, AB T4T 1A3 Phone: 403-845-4121 Fax: 403-845-6350
	Landfill Scale Office 403-845-4580
<b>Operation Hours</b>	<b>Summer Hours:</b> April 15 - September 15 Monday – Friday: 8 am - 5 pm Saturday and Sunday: Closed
	<b>Winter Hours:</b> September 16 - April 14 Monday – Friday: 8 am - 5 pm Saturday and Sunday: Closed
ALL FACILITIES ARE CLOSED STATUTORY HOLIDAYS with the exception of Nordegg	

Sources: <http://www.myrockywaste.com/landfill>



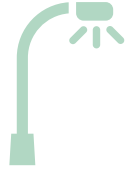
# Rocky Mountain House 2020 Community Profile

Transfer Stations		
Site Name	Location	Operation Hours
Caroline Transfer Station	SW-18-36-6 W5M *Near* Range Road 65A (386 meters SE), Rocky Mountain House, AB	Sunday 10 am - 2 pm Tuesday 2:30 pm - 5 pm (6 pm in summer) Wednesday 2:30 pm - 5 pm (6 pm in summer) Saturday 2:30 pm - 5 pm (6 pm in summer)
Crammond Transfer Station	SW-16-35-5 W5M	Sunday 2:30 pm - 5 pm (6 pm in summer) Tuesday 10 am - 2 pm Wednesday 10 am - 2 pm Saturday 10 am - 2 pm
Leslieville Transfer Station	SE-2-39-5 W5M	Tuesday 10 am - 5 pm (6 pm in summer) Wednesday 10 am - 5 pm (6 pm in summer) Saturday 10 am - 2 pm
Crossroads Transfer Station	SE-26-40-5 W5M *Near* 761 Highway (226 meters NE) Rocky Mountain House, AB	Thursdays - 10 am-5 pm (6 pm in summer) Saturday - 230-5 pm (6 pm in summer)
Cow Lake Transfer Station	SW-26-38-8 W5M 384034 752 Highway Rocky Mountain House, AB	Sunday 230-5 pm (6 pm in summer) Wednesday 10-2 pm
Everdell Transfer Station	SE-3-38-7 W5M 71675 Township Road 380 Rocky Mountain House, AB	Sunday - 10-2 pm Wednesday - 230-5 pm (6 pm in summer)
Nordegg Transfer Station	*Near* 734 Highway (0.5 km NE) Rocky Mountain House, AB	Sunday 12 am - 5 pm (6pm in summer) Monday 10am - 2 pm
Faraway Transfer Station	SW 32-40-15 W5M NE 10 43-6 W5M *Near* 53 Highway (405 meters S) Rocky Mountain House, AB	Wednesday 2:30pm - 5 pm (6pm in summer)
Rocky Transfer Station	5313 44th Avenue Rocky Mountain House, AB T4T-1A3	Tuesday 10 am - 2 pm Saturday 2:30 pm - 5 pm (6 pm in summer)
		Open Monday thru Saturday 8 am - 6 pm year around

Sources: <http://www.myrockywaste.com/transfer-stations>

## 6.4 Electricity

In Rocky Mountain House, ATCO Electric is the provider of the electrical infrastructure, but there are numerous retailers that residents and businesses may purchase their services from. Click here for a complete list of retailer and price comparisons: <https://ucahelps.alberta.ca/>



### Service Provider 1: ATCO Electric

Head Office Address: 5302 Forand Street SW  
Calgary, Alberta, Canada T3E 8B4  
Phone: 403-292-7500

**Table 30: Commercial Rates**

Small General Service	Transmission Component	Distribution Component	Total Distribution Tariff
For the first 6,575 kWh /kW of Capacity/day	0.5626¢/kWh	1.323¢/kWh	1.8856¢/kWh
All additional kWh	All additional kWh 0.5626¢/kWh	—	0.5626¢/kWh
For the first 2 kW of Capacity	\$0.2407¢/kW-day	\$0.53738¢/kW-day	\$0.77808/kW-day
All additional kW of Capacity	\$0.2407¢/kW-day	\$0.27355¢/kW-day	\$0.51425/kW-day
Oil and Gas Service	Transmission Component	Distribution Component	Total Distribution Tariff
Service Charge for the first 3 kW of Capacity y	\$0.2972¢/kW-day	\$0.85004¢/kW-day	\$1.14724/kW-day
For the next 12 kW of Capacity	\$0.2972¢/kW-day	\$0.61202¢/kW-day	\$0.90922/kW-day
For all additional kW of Capacity greater than 15 kW	\$0.2972¢/kW-day	\$0.57835¢/kW-day	\$0.87555/kW-day
For all kWh delivered	0.5701¢/kWh	—	0.5701¢/kWh

Source: Fortis Alberta: [https://www.fortisalberta.com/docs/default-source/default-document-library/2019-april-rates-options-riders.pdf?sfvrsn=ab359f1b\\_4#page=11&zoom=100,0,158](https://www.fortisalberta.com/docs/default-source/default-document-library/2019-april-rates-options-riders.pdf?sfvrsn=ab359f1b_4#page=11&zoom=100,0,158)



**Table 31: General and Large Service Rates, 2019**

General Service	Transmission Component	Distribution Component	Total Distribution Tariff
Charge for the first 50 kW of Capacity	\$0.12305¢/kW-day	\$0.24768¢/kW-day	\$0.37073/kW-day
For the next 450 kW of Capacity	\$0.12305¢/kW-day	\$0.11115¢/kW-day	\$0.23420/kW-day
For all kW of Capacity greater than 500 kW	\$0.12305¢/kW-day	\$0.08493¢/kW-day	\$0.20798/kW-day
For all kWh delivered	0.5759¢/kWh	—	0.5759¢/kWh
Large Service	Transmission Component	Distribution Component	Total Distribution Tariff
Service Charge	—	\$20.35¢/day	\$20.35/day
For all kW of Capacity	\$0.10636¢/kW-day	\$0.02045¢/kW-day	\$0.12681/kW-day
For each Contract kilometer	—	\$17.79¢/km-day	\$17.7900/km-day
For all kWh delivered	0.5588¢/kWh	—	0.5588¢/kWh
For all kW of Peak Metered Demand	\$0.23467¢/kW-day	—	\$0.23467/kW-day

Source: Fortis Alberta: [https://www.fortisalberta.com/docs/default-source/default-document-library/2019-april-rates-options-riders.pdf?sfvrsn=ab359f1b\\_4#page=11&zoom=100,0,158](https://www.fortisalberta.com/docs/default-source/default-document-library/2019-april-rates-options-riders.pdf?sfvrsn=ab359f1b_4#page=11&zoom=100,0,158)



# Rocky Mountain House 2020 Community Profile

## Service Provider 2: ATCO Electric

Head Office Address: 5302 Forand Street SW  
 Calgary, Alberta, Canada T3E 8B4  
 Phone: 403-292-7500

General Residential Service - Effective January 1, 2019	
Distribution Charges	Rate
Transmission Volumetric Rate	3.90 ¢/kWh
Distribution Volumetric Rate	7.44 ¢/kWh
Daily Distribution Rate	104.95 ¢/day
Daily Service Rate	30.26 ¢/day
Price Adjustments - the following price adjustments (riders) may apply:	
<ul style="list-style-type: none"> <li>• Municipal Assessment (Rider A)</li> <li>• Balancing Pool Adjustment (Rider B)</li> <li>• Temporary Adjustment (Rider G)</li> <li>• Interim Adjustment (Rider J)</li> <li>• SAS Adjustment (Rider S)</li> </ul>	
Standard Small General Service<500 kW - Effective January 1, 2019	
Distribution Charges	Rate
Transmission Volumetric Rate - first 200 kWh per billing cycle	1.15 ¢/kWh
Transmission Volumetric Rate – in excess of 200 kWh per billing cycle	1.15 ¢/kWh
Distribution Volumetric Rate	4.46¢/kWh
Daily Distribution Rate	9.41 ¢/day
Daily Service Rate	43.24 ¢/day
Daily Demand Rate	23.68 ¢/kW/day
Daily Transmission Rate	18.82 ¢/kW/day
Power Factor Correction - where a Customer's power factor is found to be less than 90%, the Company may require the Customer to install corrective equipment.	
Price Adjustments - the following price adjustments (riders) may apply:	
<ul style="list-style-type: none"> <li>• Municipal Assessment (Rider A)</li> <li>• Balancing Pool Adjustment (Rider B)</li> <li>• Temporary Adjustment (Rider G)</li> <li>• Interim Adjustment (Rider J)</li> <li>• SAS Adjustment (Rider S)</li> </ul>	

Source: <https://www.atco.com/en-ca/for-home/electricity/rates-billing/regulatory.html>

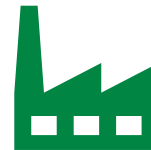
### Service Provider #3: Blue Mountain Power Co-op

4920 - 43 Street, PO Box 1538  
Rocky Mountain House, Alberta  
T4T 1B2 Canada

## 6.5 Natural Gas

### ROCKY GAS CO-OP Ltd.

4922 43 Street  
Box 697  
Rocky Mountain House, Alberta



**Table 32: Natural Gas Distribution - Service Rates**

	Rates
Co-op Distribution Cost	\$1.60 Per Gigajoule
Co-op Operating Charge	\$29.00 Per Month *
Urban Service Installation **	\$ 5,251.00
Rural Service Installation **	\$ 6,616.00
New Service (Infill) Construction Financing	6%

\* The Operating Charge is to defer some operating costs and does not include calls for service or repair. These items are billed separately.  
\*\* Urban and Rural Service Installation Price include installation, GST, and \$1.00 Co-op Membership fee.

Source: <https://www.rockygas.ca/rates.htm>

## 7. BUSINESS SUPPORT PROGRAMS AND SERVICES

### 7.1 National and Provincial Support Organizations

The following organizations support businesses by facilitating commercialization, workforce development, research and development, export growth and, raising capital funding. For a complete list of funding, grants and tax credits available to businesses locating in Rocky Mountain House please visit the [Appendix](#) at the end of this document.



**Table 33: Nation-Wide Business Support**

Federal Programs/Agencies	
Name	
Industry Canada: Information for Businesses	<a href="https://www.canada.ca/en/services/business.html">https://www.canada.ca/en/services/business.html</a>
Canadian Chamber of Commerce	<a href="http://www.chamber.ca/">http://www.chamber.ca/</a>
Invest in Canada	<a href="https://www.international.gc.ca/investors-investisseurs/index.aspx?lang=eng">https://www.international.gc.ca/investors-investisseurs/index.aspx?lang=eng</a>
Futurpreneur Canada	<a href="http://www.futurpreneur.ca/en/">http://www.futurpreneur.ca/en/</a>
Business Development Bank of Canada	<a href="https://www.bdc.ca/en/pages/home.aspx">https://www.bdc.ca/en/pages/home.aspx</a>
Canada Business Network	<a href="https://www.canada.ca/en/services/business.html">https://www.canada.ca/en/services/business.html</a>
Export Development Canada	<a href="http://www.edc.ca/en/Pages/default.aspx">http://www.edc.ca/en/Pages/default.aspx</a>
Innovation, Science and Economic Development Canada	<a href="http://www.ic.gc.ca/eic/site/icgc.nsf/eng/home">http://www.ic.gc.ca/eic/site/icgc.nsf/eng/home</a>
Human Resources and Skills Development Canada: Jobs and Training	<a href="https://www.canada.ca/en/services/jobs.html">https://www.canada.ca/en/services/jobs.html</a>
National Research Council of Canada	<a href="https://nrc.canada.ca/en">https://nrc.canada.ca/en</a>
Fundica	<a href="https://www.fundica.com/">https://www.fundica.com/</a>
CoopZone	<a href="http://www.coopzone.coop/">http://www.coopzone.coop/</a>
Tools and Financing for Aboriginal Business	<a href="https://www.ccab.com/tfab/">https://www.ccab.com/tfab/</a>
Indigenous Business Services	<a href="https://canadabusiness.ca/programs/aboriginal-business-development-services-1/">https://canadabusiness.ca/programs/aboriginal-business-development-services-1/</a>
Start Up Canada	<a href="https://www.startupcan.ca/">https://www.startupcan.ca/</a>

Source: McSweeney & Associates

## 7.2 Local/Regional Support



Below is a list of agencies at the local/regional level involved in business support and development.

This is only a subset of the institutions; more can be found at **Government of Alberta Small Business Resources:** <https://smallbusiness.alberta.ca/>

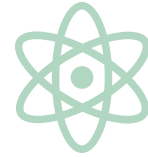
**Table 34: Local, Regional and Provincial Business Support Networks**

Local/Regional/Provincial Programs/Agencies	
Name	URL
Inno-Tech Alberta	<a href="https://innotechalberta.ca/">https://innotechalberta.ca/</a>
The Business Link	<a href="https://businesslink.ca/">https://businesslink.ca/</a>
Alberta Women Entrepreneurs	<a href="https://canadabusiness.ca/programs/alberta-women-entrepreneurs-1/">https://canadabusiness.ca/programs/alberta-women-entrepreneurs-1/</a>
Community Futures East Parkland	<a href="http://eastparkland.albertacf.com/frontpage">http://eastparkland.albertacf.com/frontpage</a>
Alberta Chambers of Commerce, AB	<a href="http://www.abchamber.ca/">http://www.abchamber.ca/</a>
Albert Innovates	<a href="https://albertainnovates.ca/">https://albertainnovates.ca/</a>
Rocky Mountain House and District Chamber of Commerce	<a href="https://www.rockychamber.org/">https://www.rockychamber.org/</a>
Western Economic Diversification Canada	<a href="https://www.canada.ca/en/western-economic-diversification.html">https://www.canada.ca/en/western-economic-diversification.html</a>
Catapult Entrepreneurs	<a href="https://www.catapultentrepreneurs.ca/">https://www.catapultentrepreneurs.ca/</a>
Alberta's agri-food industry	<a href="https://investalberta.ca/industry-profiles/agri-foods/">https://investalberta.ca/industry-profiles/agri-foods/</a>
Central Alberta Access Prosperity	<a href="https://accessprosperity.ca/">https://accessprosperity.ca/</a>
Central Alberta Economic Partnerships	<a href="https://caepalberta.com/">https://caepalberta.com/</a>

Source: McSweeney & Associates, Rocky Mountain House.



## 7.3 Education and Training



The following are only a subset of the many recognized universities and colleges in the region. A comprehensive list of Alberta colleges and universities can be found here: <http://www.collegealberta.info/>

**Table 35: Postsecondary Institutions and Training**

Post-secondary Institutions		
Institution Name	Key Programs	Location/contact
Rocky Mountain House College	Biblical Studies	Caroline, AB <a href="http://www.Rocky Mountain Housecollege.com/">http://www.Rocky Mountain Housecollege.com/</a>
Rocky Community Learning Council	Literacy, high school upgrading, accounting and Microsoft software programs, part of the Campus Central Alberta network which has online diploma and certificate programs	4934 50 St, Rocky Mountain House, AB <a href="https://www.rockyclc.ab.ca/">https://www.rockyclc.ab.ca/</a>
Burman University	35 major or track choices in bachelor's degree programs in their Division of Arts, Division of Science, School of Business, and School of Education.	6730 University Dr, Lacombe, <a href="https://www.burmanu.ca/">https://www.burmanu.ca/</a>
Red Deer College	RDC offers more than 100 different credit programs, housed in seven Schools: trades, certificates, diplomas, graduate certificates and applied degrees	100 College Blvd, Red Deer, <a href="https://www.oldscollege.ca/">https://www.oldscollege.ca/</a>
Olds College	Delivers a variety of certificate, diploma and applied degree options as well as trades and apprenticeship training.	4500 50 St, Olds, AB (403) 556-8281

Source: McSweeney and Associates

---

## 7.4 Financial and Real Estate Institutions

---

### Financial Institutions:

---

#### **ATB Financial**

4515 52 Ave, Rocky Mountain House, AB T4T 1A6  
(403) 845-2811  
[www.atb.com](http://www.atb.com)



#### **ATB Financial**

5039 50 Ave, Caroline, AB T0M 0M0  
(403) 302-5700  
[www.atb.com](http://www.atb.com)

#### **Assante Financial Management Ltd.**

5204 49 Street, Rocky Mountain House, AB T4T 1G7  
(403) 845-2822  
[www.assante.com](http://www.assante.com)

#### **CIBC**

5003 50 St NW, Rocky Mountain House, Rocky Mountain House, AB  
(403) 845-3357  
[www.CIBC.ca](http://www.CIBC.ca)

#### **Rocky Credit Union**

5035 49 St, Rocky Mountain House, AB T4T 1C1  
(403) 845-2861  
<https://www.rockycreditunion.com/>

#### **Scotiabank**

5038 49 St, Rocky Mountain House, AB T4T 1C1  
(403) 845-3331  
[www.scotiabank.com](http://www.scotiabank.com)

#### **Investors Group Financial Services**

4616 47 Ave, Rocky Mountain House, AB T4T 1C8  
(403) 845-7188  
[www.investorsgroup.com](http://www.investorsgroup.com)



# Rocky Mountain House 2020 Community Profile



## Real Estate Institutions

### RE/MAX Real Estate Central Alberta (RMH)

4624 47 St, Rocky Mountain House, AB  
T4T 1C8  
(403) 844-3030

### Andersons Home & Rental Property

4515 62 St, Rocky Mountain House, AB  
T4T 1G1

### Allan Furlotte Coldwell Banker Ontrack

4424 46 St, Rocky Mountain House, AB  
T4T 1C7  
(403) 844-3856

### Rocky Mountain House Realty, Ltd

4817 50 St, Rocky Mountain House, AB  
T4T 1C2  
(403) 871-3333

### Century 21 Westcountry Realty Ltd.

4915 50 St, Rocky Mountain House, AB  
T4T 1C2  
(403) 845-7772



## 7.5 Local Media

**Table 36: Radio**

Media	Frequency
B94 - CHBW -FM (Rocky Mountain House)	94.5 FM
Shine FM – CKRD-FM (Red Deer)	90.5 FM
Sunny 94 – CKRD-FM (Lacombe)	94.1 FM
Real Country 95.5 – CKGY-FM (Red Deer)	95.5 FM
98.9 Zed FM – CIZZ-FM (Red Deer)	98.9 FM
X100.7 – CKRI-FM (Red Deer)	100.7 FM
Big 105 – CHUB-FM (Red Deer)	105.5 FM
106.7 The Drive – CFDV-FM (Red Deer)	106.7 FM
KRAZE 101.3 - CKIK-FM (Red Deer)	101.3 FM



Source: McSweeney and Associates

**Table 37: Newspaper, Print or Online**

Newspapers	Frequency
The Mountaineer	<a href="http://www.rock-e.ca/">http://www.rock-e.ca/</a>
The Western Star	<a href="https://www.thewesternstar.net/">https://www.thewesternstar.net/</a>
Red Deer Advocate	<a href="https://www.reddeeradvocate.com">https://www.reddeeradvocate.com</a>
Red Deer Express	<a href="https://www.reddeerexpress.com">https://www.reddeerexpress.com</a>



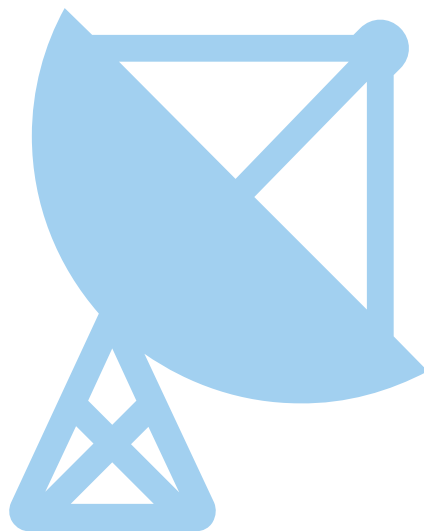
Source: McSweeney and Associates

## 7.6 Communications Infrastructure

**Table 38: Communications Infrastructure**

Cable Services	
Name of Provider	Service Area
Shaw Communications	Rocky Mountain House
Telus	Rocky Mountain House, limited areas
Internet Services	
Name of Provider	Service Area
Shaw Communications	Rocky Mountain House
Telus	Rocky Mountain House via Cell Towers
TekSavvy Solutions Inc.	Rocky Mountain House via towers
Xplornet	Rocky Mountain House via Towers and Satellite
Harewaves	Rocky Mountain House via towers
Phone Services	
Name of Provider	Service Area
Shaw	Rocky Mountain House
TELUS	Rocky Mountain House

Source: Rocky Mountain House





## 8. TOURISM

David Thompson Country Regional Tourism is a partnership consisting of Clearwater County, the Town of Rocky Mountain House, the Village of Caroline, and the Chambers of Commerce in Caroline, Rocky Mountain House and Nordegg. This partnership is focused on promoting growth through the local tourism industry.



**DAVID  
THOMPSON  
COUNTRY**  
CHALLENGE YOUR  
INNER EXPLORER

### **Hundreds of Attractions in the Area!**

Hiking, Swimming, Fishing, Off Road Vehicles, Mountain biking, Paddling, Boat and Canoe Rentals, Agricultural Tours, Mountain Climbing, Geocaching, Golfing, Museums, Historic sites, Retail Outlets, and so much more!

See all attractions here: <https://davidthompsoncountry.ca/attractions/> and <http://www.clearwatercounty.ca/p/activities>

### **More than 45 Campsites to Explore!**

See Camping:

<http://www.clearwatercounty.ca/p/campgrounds>

### **Other accommodations:**

include Bed & Breakfast, RV Parks, Guest Ranch & Farm Stays, Hostel, Hotel, Motel & Inn, Lodges & Cabins. See the following links for more information: :

<http://www.clearwatercounty.ca/p/accommodations> and [https://davidthompsoncountry.ca/listings\\_category/accommodation/](https://davidthompsoncountry.ca/listings_category/accommodation/)



**DAVID THOMPSON COUNTRY**  
CHALLENGE YOUR INNER EXPLORER

## Major Activities Planned in David Thompson Country for 2020 #dtcountry

<i>Event</i>	<i>Location</i>	<i>Dates</i>
Rocky's Freezin' for a Reason Polar Bear Dip .....	Crimson Lake Provincial Park .....	February 15
WinterFest .....	Crimson Lake Provincial Park .....	February 15
Small Town Smack Down, bull riding event .....	Caroline .....	April (TBD)
Bighorn Rodeo & Parade .....	Caroline & area .....	May 16 - 17
Baseline Mountain Biking Club Poker Rally .....	Baseline Mountain .....	June 6 - 7
Rocky Pro Rodeo .....	Rocky Mountain House .....	June 10 - 13
Rocky Mountain House Parade .....	Rocky Mountain House .....	June 12
Fat Tire Festival, mountain biking event .....	Nordegg area .....	June 19 - 21
Canada Day Celebration .....	Rocky National Historic Site .....	July 1
Prentice Creek Horse Trials .....	Rocky Mountain House area .....	July 10 - 12
Marketplace on Main .....	Rocky Mountain House .....	July - Aug., Thursdays
Nordegg Days .....	Nordegg .....	August 1
Leslieville Antique Days .....	Leslieville .....	August 1 - 2
Rocky Airshow .....	Rocky Mountain House .....	August 5
Buster Creek Horse Trials .....	Rocky Mountain House area .....	August 7 - 9
Miniature Horse Show .....	Rocky Mountain House area .....	August 7 - 9
Crimson Lake Trail Run .....	Crimson Lake .....	August 15
WPCA Chuckwagon Races .....	Rocky Mountain House .....	Aug. 13 - 16 (Pending)
Open Farm Days .....	Clearwater County farms .....	August 15 - 16
Lions Club Demolition Derby .....	Rocky Mountain House .....	August 30
Parade of Lights .....	Rocky Mountain House .....	November 21
Festival of Trees .....	Rocky Mountain House .....	November 22 - 28
Christmas Light Up .....	Caroline .....	December 5
Fur Trade Christmas .....	Rocky National Historic Site .....	December (TBD)
Riverview Country Christmas .....	Rocky Mountain House .....	December (4 weeks)

Please look for each event's information on their appropriate Facebook pages or Websites.

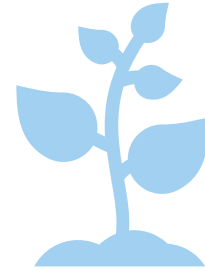
The David Thompson Country Tourism Region comprises Caroline, Rocky Mountain House and Clearwater County. Highlights include Abraham Lake, Burnstick Lake, Cow Lake, Crimson Lake, Nordegg, Crescent Falls, Siffleur Falls, Ram Falls, the Kootenay Plains and the Ya Ha Tinda.



## 9. QUALITY OF LIFE

### 9.1 Lifestyle

The community has a comprehensive healthcare and social assistance system, as well as a variety of facilities and programs to support recreation and wellbeing. The community is also known for incredible sights and tourism opportunities related to culture, heritage, nature and sport.



## 9.2 Health Service



The following is a list of available health services in the community.

### **Rocky Mountain House Health Centre**

5016 52 Ave, Rocky Mountain House, AB T4T 1T2  
(403) 845-3347  
[www.albertahealthservices.ca](http://www.albertahealthservices.ca)

### **Heritage Family Services**

5817 60 Ave, Rocky Mountain House, AB T4T 1K2  
(403) 871-3604  
[www.heritagefamilyservices.com](http://www.heritagefamilyservices.com)

### **Alberta Health Services - Mental Health**

5016 52 Ave, Rocky Mountain House, AB T4T 1T2  
(403) 844-5235  
[www.albertahealthservices.ca](http://www.albertahealthservices.ca)

### **Primary Care Network**

4809 47 Ave, Rocky Mountain House, AB T4T 1A8  
(403) 845-3050  
[www.rockypcn.com](http://www.rockypcn.com)

### **Dr. Bruce Rudkin (chiropractor)**

4835 50 St, Rocky Mountain House, AB T4T 1A8  
(403) 845-2111

### **Aspen Dental Clinic**

5216 50 Ave, Rocky Mountain House, AB  
(403) 845-3111  
[www.aspen-dental.ca](http://www.aspen-dental.ca)

### **Burden Bearers Counselling Centre**

5136 48 St, Rocky Mountain House,  
AB T4T 1M5  
(403) 845-3419  
<https://www.burdenbearers.ca/>

### **West Country Family Service Association**

4934 50 St, Rocky Mountain House, AB T4T 1G7  
(403) 845-2033  
[albertahealthservices.ca](http://albertahealthservices.ca)

### **Rocky Dental Clinic**

5111 49 St, Rocky Mountain House, AB T4T 1B8  
(403) 845-4476

### **Mountainview Dental Centre**

5040A 50 St, Rocky Mountain House, AB V7J 1C6  
(403) 845-7868  
<https://www.mountainviewdentalrocky.ca/>

### **Daniela L Roitberg Pro Corporation (Dentistry)**

5010 50 Ave, Rocky Mountain House, AB T4T 1W9  
(403) 845-3200

### **Rocky Eye Care Centre**

5040 B - 50th Street, Rocky Mountain House,  
AB, T4T 1A5  
(403) 845 2780 <https://reddeereyecare.com/>

### **Best Optical & Glass Gallery**

5010 50 Ave, Rocky Mountain House, AB T4T 1A9  
(403) 845-6048

### **Eyes & Ears Optical & Hearing Co.**

101 4809 47 Ave, Rocky Mountain House, AB T4T 1C8  
(403) 871-2020  
<http://eyesandearsclinic.ca/>

### **Gehrke & Gehrke – Chiropractors**

4820 49th St, Rocky Mountain House, Alberta T4T 1C2  
(403) 845-3536

## 9.3 Community Protection Services



**Table 39: Protective Services**

Protective Services		
Service	Service Provider	Contact Information
Police	Royal Canadian Mounted Police (RCMP) – Rocky Mountain House	4428 45 St, Rocky Mountain House, AB T4T 1P3 Administration: 403.845.2882 Complaint Line: 403.845.2881
Police	Royal Canadian Mounted Police (RCMP) – Sundre	215 - 6 Avenue NE, Sundre, AB T0M 1X0 Administration: 403.638.3675 Complaint Line: 403.638.3655
Police	Royal Canadian Mounted Police (RCMP) – Rimbey	Box 919, Rimbey, AB T0C 2J0 Administration: 403.843.2224 Complaint Line: 403.843.2223
Police	Royal Canadian Mounted Police (RCMP) – Innisfail	4904 - 45 Avenue, Innisfail, AB T4G 1N8 Administration: 403.227.3342 Complaint Line: 403.227.3341
Police	Rocky Mountain House Highway Patrol	
Fire	Rocky Mountain House Fire Department	4920 52 St, Rocky Mountain House, AB T4T 1E5 Business Hours: 403-845-4444 / 24 Hour On-Call Emergency: 403-845-2200
Ambulance	Alberta Health Services	911 (emergency)





# Rocky Mountain House 2020 Community Profile

Emergency Shelters / Resource Centres		
Shelter/ Resource	Service Provider	Contact
Family Service Centre	FCSS – Family & Community Support Services	Christenson Sports & Wellness Centre 5332 50 St, Rocky Mountain House, AB T4T 1G7 (403) 845-3720
	Aboriginal Neighbourhood Place Society	4917 - 52 Street, Rocky Mtn. House, AB, T4T 1B5 (403) 845-2788
	O'Chiese Child Welfare	(403) 989-3949
	Sunchild Child Welfare	(403) 989-3956 or (403) 989-3955
	First Nations and Inuit Health Branch, Health Canada	Bighorn • 403-721-2262 Sunchild • 403-989-3962 O'Chiese • 403-989-3900
Housing Support	Metis Urban Housing	5840 - 60 Ave, Rocky Mountain House, AB 403-845-7077 • 403-846-1204 (C)
	NADAP - National Native Addictions Drug Abuse Program	Cuisine Strawberry, O'Chiese (403) 989-3900 Mavis Redcalf, Sunchild (403) 989-3962 Jason Hunter, Bighorn Wesley First Nations (403) 721-2262
	Alberta Alcohol and Drug Abuse Commission	(866) 332-2322
	Burden Bearers Marriage and Family Counselling	(403) 845-3419
Resource and Support Centres	Native Counselling Service	(403) 347-4377
	GOEL Counselling Services	(403) 845-2033
	Rocky Aboriginal Employment Services	Unit A, 5013 - 50 Street, RMH, AB, T4T 1A9 (403) 845-6405
	Rocky Native Friendship Centre	4917 - 52nd St., Rocky Mountain House, AB T4T 1B4 (403) 845-2788
	Sunchild Headstart Program	(403) 989-3909
	Sunchild Social Services	(403) 989-3787
	Yellowhead Community Corrections	(403) 989-2550
Daycare	Barb Hudson - Life Coach	(403) 845-6099
	Sunchild Daycare	(403) 989-2467
Food Bank	The Lord's Food Bank	4923 52 St, Rocky Mountain House, AB T4T 1E3 (403) 845-7546

Source: McSweeney & Associates and the Rocky Mountain House





## 9.4 Education

**Table 40: Elementary and Secondary Schools**

Elementary Schools		
Name	Address:	Contact:
Rocky Christian School	5204 54 Avenue Rocky Mountain House, AB T4T 1S5	403-845-3516 <a href="https://rockychristian.wrsd.ca/">https://rockychristian.wrsd.ca/</a>
Pioneer Middle School	5516 54 Street Rocky Mountain House, AB T4T 1S7	403-845-2468 <a href="https://pioneer.wrsd.ca/">https://pioneer.wrsd.ca/</a>
Lochearn Elementary School	5416 - 54 Street Rocky Mountain House, AB T4T 1S6	403.845.3721 <a href="https://lochearn.wrsd.ca/">https://lochearn.wrsd.ca/</a>
École Rocky Elementary	4703 50th Ave Rocky Mountain House, Alberta T4T 1S4	403-845-3541 <a href="https://ecolerocky.wrsd.ca/">https://ecolerocky.wrsd.ca/</a>
Secondary Schools		
Name	Address:	Contact:
West Central High School	5506, 50th Street, Rocky Mountain House, AB T4T 1W7	(403) 845-3711 <a href="http://www.westcentral.wrsd.ca">www.westcentral.wrsd.ca</a>
St. Dominic Catholic High School	5502 50 St, Rocky Mountain House, AB T4T 1W6	(403) 845-5313 <a href="http://www.stdominicschool.ca">www.stdominicschool.ca</a>
Visions West Outreach School	4934 50 Street, Rocky Mountain House, AB T4T 1B2	403-844-2355 <a href="https://visionswest.wrsd.ca/">https://visionswest.wrsd.ca/</a>
David Thompson High School	RR 1 Condor, AB T0M 0P0	403-729-3930 <a href="https://davidthompson.wrsd.ca/">https://davidthompson.wrsd.ca/</a>

Source: Rocky Mountain House



## 9.5 Recreational Facilities

The area is well known for its many natural attractions and its history. Common activities include camping, hiking, OHV trails, horseback trail rides, canoeing, kayaking, and mountain climbing. Below are facilities available to residents

**Table 41: Recreation, Culture and Sports Facilities**

Name	Recreation Facilities
	Address/details
	<b>Community Centers</b>
Lou Soppit Community Centre	5404 48 Street, Rocky Mountain House, AB T4T 1B2 (403) 845-3720
Rocky Native Friendship Centre	4917 52 St, Rocky Mountain House, AB T4T 1L3 (403) 845-2788
	<b>Sports Facilities</b>
Christenson Sports & Wellness Centre	5332 50 Street, Will Sinclair Dr, Rocky Mountain House, AB T4T 1G7 (403) 845-3720
Credit Union Co-Op Aquatic Centre	5202 53 Ave, Rocky Mountain House, AB T4T 1B2 (403) 845-6977
	<b>Parks and Trails</b>
Arrow Head Park	58th Street and 61st Avenue Rocky Mountain House, AB T4T1B2
Co-Op & Credit Union Field	5332 50 Street Rocky Mountain House, AB T4T 1B2 (403) 845-3720
Centennial Park	54th Street and 55th Avenue Rocky Mountain House, AB T4T1B2
Curtis Field	5332 50 Street Rocky Mountain House, AB T4T 1B2 (403) 845-3720
Day Park	56 Street and 51 Ave Rocky Mountain House, AB T4T 1B2
Four Seasons Park	54th Street and 57th Avenue Rocky Mountain House, AB T4T 1B2
John Plathan Park	53rd Avenue and 55th Street Rocky Mountain House, AB T4T 1B2
Legion Park	54th Avenue and 48th Street Rocky Mountain House, AB T4T 1B2
Lichak Park	61st Street and 68th Avenue Rocky Mountain House, AB T4T 1B2
Lochearn Park	56th Avenue and 57th Street Rocky Mountain House, AB T4T 1B2
McNutt Park	5414 Kennor St.



# Rocky Mountain House 2020 Community Profile

	Rocky Mountain House, AB T4T 1B2
Mountain View Park	59th Street and 58th Avenue Rocky Mountain House, AB T4T 1B2
Pool Park	5332 50 St. Rocky Mountain House, AB T4T 1B2
Quinn Park	6311 47th Ave. Rocky Mountain House, AB T4T 1B2
Recreation Park Ball Diamonds	5005 44 Street Rocky Mountain House, AB T4T 1B2 (403) 845-3720
River Side Park	62nd Street and 52nd Avenue Rocky Mountain House, AB T4T 1B2
River View Park	60th Street and 70th Avenue Rocky Mountain House, AB T4T 1B2
William Jessop Park	5735 58th St. Rocky Mountain House, AB T4T 1S2
Skateboard Park	4733 54 Street Rocky Mountain House, AB T4T 1B2

Source: Rocky Mountain House



## 9.6 Local Events



The area hosts the following events/festivals on a reoccurring basis:

**Figure 9: Local Events and Festivals**

Event	Area	When
Snowy Saturdays	Crimson Lake	Saturdays, January - March
Rocky's Freezin' For A Reason Polar Bear Dip	Crimson Lake	February
Small Town Smack Down, bull riding event	Caroline	April
Bighorn Rodeo, parade	Caroline	May
Rocky Pro Rodeo, parade	Rocky Mountain House	June
Fat Tire Festival	Nordegg area	June
Canada Day Celebration	Rocky National Historic Site	July 1
Prentice Creek Horse Trials	Rocky Mountain House area	July
Marketplace on Main	Rocky Mountain House	Thursdays, July - August
Leslieville Antique Days	Leslieville	August
Crimson Lake Trail Run	Crimson Lake	August
WPCA Chuckwagon Races	Rocky Mountain House	August
Lions Demolition Derby	Rocky Mountain House	August
Fright Night at the Site	Rocky National Historic Site	October
Festival of Trees, Parade of Lights	Rocky Mountain House	November
Christmas Light Up	Caroline	December
Fur Trade Christmas	Rocky National Historic Site	December
Riverview Country Christmas	Rocky Mountain House	December (3 weeks)
Rocky Air Show	Rocky Mountain House	July or Aug of 2020 (every 2 years)

Source: Rocky Mountain House



## APPENDIX: FEDERAL AND PROVINCIAL ECONOMIC DEVELOPMENT SUPPORT PROGRAMS

Capital	Web
AgriCompetitiveness Program	<a href="http://www.agr.gc.ca/eng/programs-and-services/agricompetitiveness-program/?id=1517335776475">http://www.agr.gc.ca/eng/programs-and-services/agricompetitiveness-program/?id=1517335776475</a>
Canada Small Business Financing Program - Industry Canada	<a href="http://www.ic.gc.ca/eic/site/csbf-pfpec.nsf/eng/Home">http://www.ic.gc.ca/eic/site/csbf-pfpec.nsf/eng/Home</a>
Futurpreneur Canada Newcomer Program	<a href="https://www.futurpreneur.ca/en/get-started/financing-and-mentoring/newcomer/">https://www.futurpreneur.ca/en/get-started/financing-and-mentoring/newcomer/</a>
Investments in Forest Industry Transformation	<a href="http://www.nrcan.gc.ca/forests/federal-programs/13139">http://www.nrcan.gc.ca/forests/federal-programs/13139</a>
Metis Voyageur Development Fund	<a href="http://www.mvdf.ca/">http://www.mvdf.ca/</a>
SD Tech Fund	<a href="https://www.sdtc.ca/en/apply/funds/">https://www.sdtc.ca/en/apply/funds/</a>
Strategic Innovation Fund: Stream 2	<a href="http://www.ic.gc.ca/eic/site/125.nsf/eng/home">http://www.ic.gc.ca/eic/site/125.nsf/eng/home</a>
Aboriginal Economic Partnerships Program (AEPP)	<a href="https://www.alberta.ca/aboriginal-economic-partnerships-program.aspx">https://www.alberta.ca/aboriginal-economic-partnerships-program.aspx</a>
Alberta Investor Tax Credit (AITC)	<a href="https://www.alberta.ca/alberta-investor-tax-credit.aspx">https://www.alberta.ca/alberta-investor-tax-credit.aspx</a>
Capital Investment Tax Credit (CITC)	<a href="https://www.alberta.ca/capital-investment-tax-credit.aspx">https://www.alberta.ca/capital-investment-tax-credit.aspx</a>
Alberta Innovates - Clean Technology Business Innovation (CTBI) Voucher Program	<a href="https://albertainnovates.ca/funding-clean-technology/climate-change-innovation-and-technology-framework-ccitf/#CTD">https://albertainnovates.ca/funding-clean-technology/climate-change-innovation-and-technology-framework-ccitf/#CTD</a>
Alberta Enterprise Corporation	<a href="http://www.alberta-enterprise.ca/">http://www.alberta-enterprise.ca/</a>
CIP Project-Based grant	<a href="https://www.alberta.ca/cip-project-based-grant.aspx">https://www.alberta.ca/cip-project-based-grant.aspx</a>
CIP Operating grant	<a href="https://www.alberta.ca/cip-operating-grant.aspx">https://www.alberta.ca/cip-operating-grant.aspx</a>
CIP Major Cultural and Sport Events grant	<a href="https://www.alberta.ca/cip-major-cultural-sport-events-grant.aspx">https://www.alberta.ca/cip-major-cultural-sport-events-grant.aspx</a>
Western Diversification Program	<a href="https://www.wd-deo.gc.ca/eng/301.asp">https://www.wd-deo.gc.ca/eng/301.asp</a>
Economic Development Initiative	<a href="https://www.wd-deo.gc.ca/eng/11564.asp">https://www.wd-deo.gc.ca/eng/11564.asp</a>



# Rocky Mountain House 2020 Community Profile

Community Development	Web
Tourism Growth Innovation Fund	<a href="https://www.alberta.ca/tourism-growth-innovation-fund.aspx">https://www.alberta.ca/tourism-growth-innovation-fund.aspx</a>
Project Macro Grant	<a href="https://www.alberta.ca/project-macro-grant.aspx">https://www.alberta.ca/project-macro-grant.aspx</a>
Project Micro Grant	<a href="https://www.alberta.ca/project-micro-grant.aspx">https://www.alberta.ca/project-micro-grant.aspx</a>
Engagement operating grant program	<a href="https://open.alberta.ca/publications/engagement-operating-grant-program-guidelines">https://open.alberta.ca/publications/engagement-operating-grant-program-guidelines</a>
Leadership and certification operating grant program guidelines	<a href="https://open.alberta.ca/publications/leadership-and-certification-operating-grant-program-guidelines">https://open.alberta.ca/publications/leadership-and-certification-operating-grant-program-guidelines</a>
Alberta Blue Cross - Healthy Communities Grant	<a href="https://www.ab.bluecross.ca/aboutus/healthy-communities-grant.php">https://www.ab.bluecross.ca/aboutus/healthy-communities-grant.php</a>
Alberta Indigenous Solar Program	<a href="http://indigenous.alberta.ca/AISP.cfm">http://indigenous.alberta.ca/AISP.cfm</a>
Alberta Municipal Water/Wastewater Partnership (AMWWP)	<a href="http://www.transportation.alberta.ca/2719.htm">http://www.transportation.alberta.ca/2719.htm</a>
First Nations Development Fund Grant Program	<a href="http://indigenous.alberta.ca/FNDF-Grant-Program.cfm">http://indigenous.alberta.ca/FNDF-Grant-Program.cfm</a>
Alberta Community Resilience Program	<a href="http://aep.alberta.ca/water/programs-and-services/alberta-community-resilience-program/default.aspx">http://aep.alberta.ca/water/programs-and-services/alberta-community-resilience-program/default.aspx</a>





# Rocky Mountain House 2020 Community Profile

Commercialization	Web
Canadian Technology Accelerators	<a href="http://www.international.gc.ca/trade-commerce/cta-atc/index.aspx?lang=eng">http://www.international.gc.ca/trade-commerce/cta-atc/index.aspx?lang=eng</a>
AgrilInnovate Program	<a href="http://www.agr.gc.ca/eng/programs-and-services/agriinnovate-program/?id=1515682916298">http://www.agr.gc.ca/eng/programs-and-services/agriinnovate-program/?id=1515682916298</a>
CDMN Soft Landing Program	<a href="https://cdmn.ca/program/soft-landing">https://cdmn.ca/program/soft-landing</a>
Industrial Research Assistance Program (IRAP) - National Research Council Canada	<a href="http://www.nrc-cnrc.gc.ca/eng/ibp/irap/about/index.html">http://www.nrc-cnrc.gc.ca/eng/ibp/irap/about/index.html</a>
Investments in Forest Industry Transformation	<a href="http://www.nrcan.gc.ca/forests/federal-programs/13139">http://www.nrcan.gc.ca/forests/federal-programs/13139</a>
SD Tech Fund	<a href="https://www.sdtc.ca/en/apply/funds/">https://www.sdtc.ca/en/apply/funds/</a>
Aboriginal Business and Entrepreneurship Development	<a href="https://canadabusiness.ca/programs/aboriginal-business-and-entrepreneurship-development-1/">https://canadabusiness.ca/programs/aboriginal-business-and-entrepreneurship-development-1/</a>
Alberta Innovates - Cross Sectoral Investments (Alberta Innovation Voucher and Micro-Voucher Programs)	<a href="https://albertainnovates.ca/funding-entrepreneurial-investments/alberta-innovation-voucher/">https://albertainnovates.ca/funding-entrepreneurial-investments/alberta-innovation-voucher/</a>
Alberta Innovates - Cross Sectoral Investments (Product Demonstration Program)	<a href="https://albertainnovates.ca/funding-entrepreneurial-investments/product-demonstration-program/">https://albertainnovates.ca/funding-entrepreneurial-investments/product-demonstration-program/</a>
Alberta Innovates - Cross Sectoral Investments (Alberta-Jalisco Innovation and Commercialization Program)	<a href="https://albertainnovates.ca/funding-entrepreneurial-investments/alberta-china/">https://albertainnovates.ca/funding-entrepreneurial-investments/alberta-china/</a>
Strategic and international technology partnerships	<a href="https://www.alberta.ca/strategic-international-technology-partnerships.aspx">https://www.alberta.ca/strategic-international-technology-partnerships.aspx</a>
Alberta Innovates - Clean Technology Commercialization Program	<a href="https://albertainnovates.ca/funding-clean-technology/climate-change-innovation-and-technology-framework-cciff/#CTD">https://albertainnovates.ca/funding-clean-technology/climate-change-innovation-and-technology-framework-cciff/#CTD</a>
Canadian Agricultural Partnership: Products to Markets	<a href="https://cap.alberta.ca/CAP/program/MARKETS_S MALL">https://cap.alberta.ca/CAP/program/MARKETS_S MALL</a>
Canadian Agricultural Partnership: Value-Added Products to Markets	<a href="https://cap.alberta.ca/CAP/program/MARKETS_LA RGE">https://cap.alberta.ca/CAP/program/MARKETS_LA RGE</a>
Alberta-Europe Technology Collaboration Fund	<a href="http://www.gccir.ca/alberta-europe-collaboration-fund/">http://www.gccir.ca/alberta-europe-collaboration-fund/</a>



# Rocky Mountain House 2020 Community Profile

Media (Digital and Other)	Web
Canadian Media Fund	<a href="http://www.cmf-fmc.ca/funding-programs/convergent-stream/">http://www.cmf-fmc.ca/funding-programs/convergent-stream/</a>
Canadian Film or Video Production Services Tax Credit (PSTC)	<a href="https://www.canada.ca/en/canadian-heritage/services/funding/cavco-tax-credits/film-video-production-services.html">https://www.canada.ca/en/canadian-heritage/services/funding/cavco-tax-credits/film-video-production-services.html</a>
Theatre Individual Project Funding	<a href="https://www.affta.ab.ca/funding/find-funding/theatre-individual-project-funding-0">https://www.affta.ab.ca/funding/find-funding/theatre-individual-project-funding-0</a>
Major Arts Presenters Operating Funding	<a href="https://www.affta.ab.ca/funding/find-funding/major-arts-presenters-operating-funding">https://www.affta.ab.ca/funding/find-funding/major-arts-presenters-operating-funding</a>
Emerging Curator Fellowship	<a href="https://www.affta.ab.ca/funding/find-funding/emerging-curator-fellowship">https://www.affta.ab.ca/funding/find-funding/emerging-curator-fellowship</a>
Visual Arts and New Media Individual Project Funding	<a href="https://www.affta.ab.ca/funding/find-funding/visual-arts-and-new-media-individual-project-funding">https://www.affta.ab.ca/funding/find-funding/visual-arts-and-new-media-individual-project-funding</a>
Public Art Galleries Operating Funding	<a href="https://www.affta.ab.ca/funding/find-funding/public-art-galleries-operating-funding">https://www.affta.ab.ca/funding/find-funding/public-art-galleries-operating-funding</a>
Film and Video Arts Scholarship	<a href="https://www.affta.ab.ca/funding/find-funding/film-and-video-arts-scholarship">https://www.affta.ab.ca/funding/find-funding/film-and-video-arts-scholarship</a>
Indigenous Arts Individual Project Funding	<a href="https://www.affta.ab.ca/funding/find-funding">https://www.affta.ab.ca/funding/find-funding</a>
Professional Performing Arts Organizations Operating Funding	<a href="https://www.affta.ab.ca/funding/find-funding/professional-performing-arts-organizations-operating-funding">https://www.affta.ab.ca/funding/find-funding/professional-performing-arts-organizations-operating-funding</a>
Provincial Arts Service Organizations Operating Funding	<a href="https://www.affta.ab.ca/funding/find-funding/provincial-arts-service-organizations-operating-funding">https://www.affta.ab.ca/funding/find-funding/provincial-arts-service-organizations-operating-funding</a>
Film and Video Individual Project Funding	<a href="https://www.affta.ab.ca/funding/find-funding/film-and-video-individual-project-funding">https://www.affta.ab.ca/funding/find-funding/film-and-video-individual-project-funding</a>
Arts Presenting Project Funding	<a href="https://www.affta.ab.ca/funding/find-funding/arts-presenting-project-funding">https://www.affta.ab.ca/funding/find-funding/arts-presenting-project-funding</a>
Community Support Organizations Operating Funding	<a href="https://www.affta.ab.ca/funding/find-funding/community-support-organizations-operating-funding">https://www.affta.ab.ca/funding/find-funding/community-support-organizations-operating-funding</a>
Organizations: Arts Project Funding	<a href="https://www.affta.ab.ca/funding/find-funding/organizations-arts-project-funding">https://www.affta.ab.ca/funding/find-funding/organizations-arts-project-funding</a>



# Rocky Mountain House 2020 Community Profile

Media (Digital and Other)	Web
Music Individual Project Funding	<a href="https://www.affta.ab.ca/funding/find-funding/music-individual-project-funding">https://www.affta.ab.ca/funding/find-funding/music-individual-project-funding</a>
Dance Individual Project Funding	<a href="https://www.affta.ab.ca/funding/find-funding/dance-individual-project-funding">https://www.affta.ab.ca/funding/find-funding/dance-individual-project-funding</a>
Indigenous Arts Projects for Organizations	<a href="https://www.affta.ab.ca/funding/find-funding/indigenous-arts-projects-organizations">https://www.affta.ab.ca/funding/find-funding/indigenous-arts-projects-organizations</a>
Screen-based Production Grant	<a href="https://www.alberta.ca/screen-based-production-grant.aspx">https://www.alberta.ca/screen-based-production-grant.aspx</a>
Alberta Project Script Development Grant	<a href="https://www.alberta.ca/alberta-project-script-development-grant.aspx">https://www.alberta.ca/alberta-project-script-development-grant.aspx</a>
Post-Production, Visual Effects and Digital Animation Grant (PPG)	<a href="https://www.alberta.ca/post-production-visual-effects-digital-animation-grant.aspx">https://www.alberta.ca/post-production-visual-effects-digital-animation-grant.aspx</a>
Cultural Industry Support Organizations Operating Grant	<a href="https://www.alberta.ca/cultural-industry-support-organizations-operating-grant.aspx">https://www.alberta.ca/cultural-industry-support-organizations-operating-grant.aspx</a>
Cultural Industry Organizations Project Grant	<a href="https://www.alberta.ca/cultural-industry-organizations-project-grant.aspx">https://www.alberta.ca/cultural-industry-organizations-project-grant.aspx</a>

Energy	Web
Canadian Industry Program for Energy Conservation (CIPEC)	<a href="http://www.nrcan.gc.ca/energy/efficiency/industry/cipec/5153">http://www.nrcan.gc.ca/energy/efficiency/industry/cipec/5153</a>
IESO Conservation Fund	<a href="http://www.ieso.ca/get-involved/funding-programs/conservation-fund/cf-overview">http://www.ieso.ca/get-involved/funding-programs/conservation-fund/cf-overview</a>
ecoENERGY Efficiency for Industry Program: ISO 50001	<a href="http://www.nrcan.gc.ca/energy/efficiency/industry/financial-assistance/5387">http://www.nrcan.gc.ca/energy/efficiency/industry/financial-assistance/5387</a>
Save on Energy	<a href="https://www.saveonenergy.ca/Business.aspx">https://www.saveonenergy.ca/Business.aspx</a>
SD Tech Fund	<a href="https://www.sdtc.ca/en/apply/funds/">https://www.sdtc.ca/en/apply/funds/</a>
Alberta Indigenous Community Energy Program	<a href="http://indigenous.alberta.ca/AICEP.cfm">http://indigenous.alberta.ca/AICEP.cfm</a>
Alberta Innovates - Clean Energy (Clean Technology)	<a href="https://albertainnovates.ca/funding-clean-technology/">https://albertainnovates.ca/funding-clean-technology/</a>
Alberta Innovates - Clean Energy (Advanced Hydrocarbons)	<a href="https://albertainnovates.ca/funding-advanced-hydrocarbons/">https://albertainnovates.ca/funding-advanced-hydrocarbons/</a>
Alberta Innovates - Water and Land (Tailings Management)	<a href="https://albertainnovates.ca/funding/water-and-land/tailings-management/">https://albertainnovates.ca/funding/water-and-land/tailings-management/</a>

Energy	Web
Petrochemicals Diversification Program	<a href="https://www.alberta.ca/petrochemicals-diversification-program.aspx">https://www.alberta.ca/petrochemicals-diversification-program.aspx</a>
Coal Community Transition Fund	<a href="https://www.alberta.ca/coal-community-transition-fund.aspx">https://www.alberta.ca/coal-community-transition-fund.aspx</a>
Alberta Innovates - Clean Energy (Advanced Hydrocarbons)	<a href="https://albertainnovates.ca/funding-advanced-hydrocarbons/">https://albertainnovates.ca/funding-advanced-hydrocarbons/</a>
Alberta Innovates - Clean Technology Facilities Support Program	<a href="https://albertainnovates.ca/funding-clean-technology/climate-change-innovation-and-technology-framework-cciff/#CTD">https://albertainnovates.ca/funding-clean-technology/climate-change-innovation-and-technology-framework-cciff/#CTD</a>
Alberta Indigenous Solar Program	<a href="https://www.alberta.ca/alberta-indigenous-solar-program.aspx">https://www.alberta.ca/alberta-indigenous-solar-program.aspx</a>

Export	Web
Canadian Commercial Corporation (CCC)	<a href="http://www.ccc.ca/">http://www.ccc.ca/</a>
TAP Trade Accelerator program (Central Alberta)	<a href="https://www.edc.ca/en/campaign/trade-accelerator-program.html">https://www.edc.ca/en/campaign/trade-accelerator-program.html</a>
New Exporters to Border States (NEBS)	<a href="http://www.canadabusiness.ca/eng/program/2229/">http://www.canadabusiness.ca/eng/program/2229/</a>
CanExport Program	<a href="http://international.gc.ca/canexport/index.aspx?lang=eng">http://international.gc.ca/canexport/index.aspx?lang=eng</a>
Expanding Market Opportunities Program	<a href="http://www.nrcan.gc.ca/forests/federal-programs/13133">http://www.nrcan.gc.ca/forests/federal-programs/13133</a>
Export Market Access - A Global Expansion Program	<a href="http://exportaccess.ca/en/home">http://exportaccess.ca/en/home</a>
Going Global Innovation	<a href="http://tradecommissioner.gc.ca/funding-financement/ggi-vmi/index.aspx?lang=eng">http://tradecommissioner.gc.ca/funding-financement/ggi-vmi/index.aspx?lang=eng</a>
Alberta Innovates - Cross Sectoral Investments (Industry Associates Programs)	<a href="https://albertainnovates.ca/funding-entrepreneurial-investments/export-readiness-voucher/">https://albertainnovates.ca/funding-entrepreneurial-investments/export-readiness-voucher/</a>
Alberta Innovates - Cross Sectoral Investments (Export Readiness Micro-Voucher program)	<a href="https://albertainnovates.ca/funding-entrepreneurial-investments/industry-associates-program/">https://albertainnovates.ca/funding-entrepreneurial-investments/industry-associates-program/</a>
SME Export Support Fund	<a href="https://www.alberta.ca/export-support-fund.aspx">https://www.alberta.ca/export-support-fund.aspx</a>
Value-Added Products to Markets	<a href="https://cap.alberta.ca/CAP/program/MARKETS_LARGE">https://cap.alberta.ca/CAP/program/MARKETS_LARGE</a>



# Rocky Mountain House 2020 Community Profile

Human Resources and Training	Web
Apprenticeship Job Creation Tax Credit - Canada Revenue Agency	<a href="http://www.cra-arc.gc.ca/tx/ndvds/tpcs/ncm-tx/rtrm/cmpltng/ddctns/lns409-485/412/jctc-eng.html">http://www.cra-arc.gc.ca/tx/ndvds/tpcs/ncm-tx/rtrm/cmpltng/ddctns/lns409-485/412/jctc-eng.html</a>
Canada Summer Jobs	<a href="https://www.canada.ca/en/employment-social-development/services/funding/canada-summer-jobs.html">https://www.canada.ca/en/employment-social-development/services/funding/canada-summer-jobs.html</a>
Canadian Institutes of Health Research	<a href="http://www.cihr-irsc.gc.ca/e/37788.html">http://www.cihr-irsc.gc.ca/e/37788.html</a>
Concierge Service - Government of Canada	<a href="http://concierge.portal.gc.ca/about-us">http://concierge.portal.gc.ca/about-us</a>
Industrial Research Assistance Program (IRAP) - National Research Council Canada	<a href="http://www.nrc-cnrc.gc.ca/eng/ibp/irap/about/index.html">http://www.nrc-cnrc.gc.ca/eng/ibp/irap/about/index.html</a>
MITACS Accelerate	<a href="http://www.mitacs.ca/accelerate">http://www.mitacs.ca/accelerate</a>
MITACS Elevate	<a href="https://www.mitacs.ca/en/programs/elevate/program-details">https://www.mitacs.ca/en/programs/elevate/program-details</a>
NSERC CRD	<a href="http://www.nserc-crsng.gc.ca/Professors-Professeurs/RPP-PP/CRD-RDC_eng.asp">http://www.nserc-crsng.gc.ca/Professors-Professeurs/RPP-PP/CRD-RDC_eng.asp</a>
Skills Link Program	<a href="http://www.servicecanada.gc.ca/eng/epb/yi/yep/newprog/skillslink.shtml">http://www.servicecanada.gc.ca/eng/epb/yi/yep/newprog/skillslink.shtml</a>
Youth Employment Program - National Research Council Canada	<a href="http://www.nrc-cnrc.gc.ca/eng/irap/services/youth_initiatives.html">http://www.nrc-cnrc.gc.ca/eng/irap/services/youth_initiatives.html</a>
Alberta Innovates - Cross Sectoral Investments (Alberta Entrepreneurship Incubator Program)	<a href="https://albertainnovates.ca/funding-entrepreneurial-investments/entrepreneur-incubator/">https://albertainnovates.ca/funding-entrepreneurial-investments/entrepreneur-incubator/</a>
Alberta Innovates - Clean Technology Development (CTD) program	<a href="https://albertainnovates.ca/funding-clean-technology/climate-change-innovation-and-technology-framework-cciff/#CTD">https://albertainnovates.ca/funding-clean-technology/climate-change-innovation-and-technology-framework-cciff/#CTD</a>
Alberta Innovates - Clean Technology Networks Program	<a href="https://albertainnovates.ca/funding-clean-technology/climate-change-innovation-and-technology-framework-cciff/#CTD">https://albertainnovates.ca/funding-clean-technology/climate-change-innovation-and-technology-framework-cciff/#CTD</a>
Alberta Innovates - Clean Technology Facilities Support Program	<a href="https://albertainnovates.ca/funding-clean-technology/climate-change-innovation-and-technology-framework-cciff/#CTD">https://albertainnovates.ca/funding-clean-technology/climate-change-innovation-and-technology-framework-cciff/#CTD</a>
Tourism Entrepreneurship Startup Seminar	<a href="https://www.alberta.ca/tourism-entrepreneurship-programs.aspx/">https://www.alberta.ca/tourism-entrepreneurship-programs.aspx/</a>
Tourism Entrepreneurial Support	<a href="https://www.alberta.ca/diversifying-economy.aspx#toc-4">https://www.alberta.ca/diversifying-economy.aspx#toc-4</a>



# Rocky Mountain House 2020 Community Profile

Human Resources and Training	Web
Youth Agriculture Education	<a href="https://cap.alberta.ca/CAP/program/YOUTH_EDUCATION">https://cap.alberta.ca/CAP/program/YOUTH_EDUCATION</a>
Canada-Alberta Job Grant	<a href="https://www.alberta.ca/canada-alberta-job-grant.aspx">https://www.alberta.ca/canada-alberta-job-grant.aspx</a>
Summer Temporary Employment Program (STEP)	<a href="https://www.alberta.ca/step.aspx">https://www.alberta.ca/step.aspx</a>
Training for Work programs	<a href="https://www.alberta.ca/training-work-programs.aspx">https://www.alberta.ca/training-work-programs.aspx</a>
Indigenous Tourism	<a href="https://www.alberta.ca/indigenous-tourism.aspx">https://www.alberta.ca/indigenous-tourism.aspx</a>
Leadership and certification operating grant program guidelines	<a href="https://open.alberta.ca/publications/leadership-and-certification-operating-grant-program-guidelines">https://open.alberta.ca/publications/leadership-and-certification-operating-grant-program-guidelines</a>
Indigenous Relations' (IR) First Nations Consultation Capacity Investment Program	<a href="http://indigenous.alberta.ca/documents/FNCCIP-Overview.pdf?0.7253097766318577">http://indigenous.alberta.ca/documents/FNCCIP-Overview.pdf?0.7253097766318577</a>

Research and Development	Web
AgriInnovation Program	<a href="http://www.agr.gc.ca/eng/programs-and-services/agriinnovate-program/?id=1515682916298">http://www.agr.gc.ca/eng/programs-and-services/agriinnovate-program/?id=1515682916298</a>
AgriScience Program	<a href="http://www.agr.gc.ca/eng/programs-and-services/agriscience-program-projects/?id=1516993063537">http://www.agr.gc.ca/eng/programs-and-services/agriscience-program-projects/?id=1516993063537</a>
Canada Foundation for Innovation	<a href="http://www.innovation.ca/en/OurFunds">http://www.innovation.ca/en/OurFunds</a>
Canadian Institutes of Health Research	<a href="http://www.cihr-irsc.gc.ca/e/37788.html">http://www.cihr-irsc.gc.ca/e/37788.html</a>
Canadian International Innovation Program (CIIP)	<a href="http://tradecommissioner.gc.ca/funding-financement/ciip-pcii/index.aspx?lang=eng">http://tradecommissioner.gc.ca/funding-financement/ciip-pcii/index.aspx?lang=eng</a>
Communications Research Centre Canada - Industry Canada	<a href="http://www.crc.gc.ca/eic/site/069.nsf/eng/h_00022.html">http://www.crc.gc.ca/eic/site/069.nsf/eng/h_00022.html</a>
Automotive Partnership Canada	<a href="http://www.apc-pac.ca/index_eng.asp">http://www.apc-pac.ca/index_eng.asp</a>
Canada Foundation for Innovation	<a href="https://www.innovation.ca/awards/innovation-fund">https://www.innovation.ca/awards/innovation-fund</a>
Canadian Institutes of Health Research	<a href="https://www.sdtc.ca/en/funding/funds/nextgen">https://www.sdtc.ca/en/funding/funds/nextgen</a>
College and Community Innovation Program & Applied Research and Development Grants	<a href="http://www.nserc-crsng.gc.ca/Professors-Professeurs/RPP-PP/ARD-RDA_eng.asp">http://www.nserc-crsng.gc.ca/Professors-Professeurs/RPP-PP/ARD-RDA_eng.asp</a>



Research and Development	Web
Industrial Research Assistance Program (IRAP) - National Research Council Canada	<a href="http://www.cra-arc.gc.ca/sred/">http://www.cra-arc.gc.ca/sred/</a>
MITACS Accelerate	<a href="http://ito.ic.gc.ca/eic/site/ito-oti.nsf/eng/h_00022.html">http://ito.ic.gc.ca/eic/site/ito-oti.nsf/eng/h_00022.html</a>
New Directions Research Program - OMAFRA	<a href="http://ito.ic.gc.ca/eic/site/ito-oti.nsf/eng/h_00837.html">http://ito.ic.gc.ca/eic/site/ito-oti.nsf/eng/h_00837.html</a>
NSERC Engage R&D	<a href="http://www.nrc-cnrc.gc.ca/eng/irap/services/youth_initiatives.html">http://www.nrc-cnrc.gc.ca/eng/irap/services/youth_initiatives.html</a>
Collaborative Technology Development and Demonstration Stream	<a href="http://www.ic.gc.ca/eic/site/125.nsf/eng/00002.html">http://www.ic.gc.ca/eic/site/125.nsf/eng/00002.html</a>
Aboriginal Business and Entrepreneurship Development	<a href="https://canadabusiness.ca/programs/aboriginal-business-and-entrepreneurship-development-1/">https://canadabusiness.ca/programs/aboriginal-business-and-entrepreneurship-development-1/</a>
Alberta Innovates - Bio Sector - Guest Speaker Support Program	<a href="https://albertainnovates.ca/funding-prion/guest-speaker-support-program/">https://albertainnovates.ca/funding-prion/guest-speaker-support-program/</a>
Alberta Innovates - Clean Energy (Advanced Hydrocarbons)	<a href="https://albertainnovates.ca/funding-advanced-hydrocarbons/">https://albertainnovates.ca/funding-advanced-hydrocarbons/</a>
Alberta Innovates - Clean Energy (Clean Technology)	<a href="https://albertainnovates.ca/funding-clean-technology/">https://albertainnovates.ca/funding-clean-technology/</a>
Alberta Innovates - Cross Sectoral Investments (Alberta Innovation Voucher and Micro-Voucher Programs)	<a href="https://albertainnovates.ca/funding-entrepreneurial-investments/alberta-innovation-voucher/">https://albertainnovates.ca/funding-entrepreneurial-investments/alberta-innovation-voucher/</a>
Alberta Innovates - Cross Sectoral Investments (Alberta Small Business Research and Innovation Initiative)	<a href="https://albertainnovates.ca/funding-entrepreneurial-investments/asbiri/">https://albertainnovates.ca/funding-entrepreneurial-investments/asbiri/</a>
Alberta Innovates - Cross Sectoral Investments (Export Readiness Micro-Voucher program)	<a href="https://albertainnovates.ca/funding-entrepreneurial-investments/industry-associates-program/">https://albertainnovates.ca/funding-entrepreneurial-investments/industry-associates-program/</a>
Alberta Innovates - Clean Technology Development (CTD) program	<a href="https://albertainnovates.ca/funding-clean-technology/climate-change-innovation-and-technology-framework-ccitf/#CTD">https://albertainnovates.ca/funding-clean-technology/climate-change-innovation-and-technology-framework-ccitf/#CTD</a>
Alberta Innovates - Clean Technology Commercialization Program	<a href="https://albertainnovates.ca/funding-clean-technology/climate-change-innovation-and-technology-framework-ccitf/#CTD">https://albertainnovates.ca/funding-clean-technology/climate-change-innovation-and-technology-framework-ccitf/#CTD</a>
Alberta Innovates - Clean Technology Facilities Support Program	<a href="https://albertainnovates.ca/funding-clean-technology/climate-change-innovation-and-technology-framework-ccitf/#CTD">https://albertainnovates.ca/funding-clean-technology/climate-change-innovation-and-technology-framework-ccitf/#CTD</a>
Alberta Innovates - Clean Technology Large-Scale Demonstration and Innovative Deployment Program	<a href="https://albertainnovates.ca/funding-clean-technology/climate-change-innovation-and-technology-framework-ccitf/#CTD">https://albertainnovates.ca/funding-clean-technology/climate-change-innovation-and-technology-framework-ccitf/#CTD</a>



# Rocky Mountain House 2020 Community Profile

Research and Development	Web
Value-Added Products to Markets	<a href="https://cap.alberta.ca/CAP/program/MARKETS_LARGE">https://cap.alberta.ca/CAP/program/MARKETS_LARGE</a>
Strategic Research and Development Grant Program	<a href="https://www1.agric.gov.ab.ca/general/progserv.nsf/All/pgmsrv460">https://www1.agric.gov.ab.ca/general/progserv.nsf/All/pgmsrv460</a>
Tourism Growth Innovation Fund	<a href="https://www.alberta.ca/tourism-growth-innovation-fund.aspx">https://www.alberta.ca/tourism-growth-innovation-fund.aspx</a>
Alberta-Ontario Innovation Program	<a href="http://www.oce-ontario.org/programs/industry-academic-collaboration/albertaontario">http://www.oce-ontario.org/programs/industry-academic-collaboration/albertaontario</a>

Source: McSweeney & Associates

Innovation	Web
Alberta Innovates - Bio Sector - New Collaborations (Prion)	<a href="https://albertainnovates.ca/funding-prion/new-collaborations/">https://albertainnovates.ca/funding-prion/new-collaborations/</a>
Going Global Innovation	<a href="http://tradecommissioner.gc.ca/funding-financement/ggi-vmi/index.aspx?lang=eng">http://tradecommissioner.gc.ca/funding-financement/ggi-vmi/index.aspx?lang=eng</a>
Build in Canada Innovation Program (BCIP)	<a href="https://buyandsell.gc.ca/initiatives-and-programs/build-in-canada-innovation-program-bcip/overview-of-bcip">https://buyandsell.gc.ca/initiatives-and-programs/build-in-canada-innovation-program-bcip/overview-of-bcip</a>
Canada Periodical Fund	<a href="http://canada.pch.gc.ca/eng/1458744331821">http://canada.pch.gc.ca/eng/1458744331821</a>
OMF - Music Industry Development	<a href="http://www.omdc.on.ca/music/the_ontario_music_fund/music_industry_development.htm">http://www.omdc.on.ca/music/the_ontario_music_fund/music_industry_development.htm</a>
Canadian International Innovation Program (CIIP)	<a href="https://www.tradecommissioner.gc.ca/funding-financement/ciip-pcii/index.aspx?lang=eng">https://www.tradecommissioner.gc.ca/funding-financement/ciip-pcii/index.aspx?lang=eng</a>
MaRS Catalyst Fund	<a href="https://www.marsdd.com/funding/mars-catalyst-fund/">https://www.marsdd.com/funding/mars-catalyst-fund/</a>
Connect to Innovate	<a href="https://www.canada.ca/en/innovation-science-economic-development/programs/computer-internet-access/connect-to-innovate.html">https://www.canada.ca/en/innovation-science-economic-development/programs/computer-internet-access/connect-to-innovate.html</a>
Matching Investment Fund - Canadian Dairy Commission (CDC)	<a href="http://www.milkingredients.ca/index-eng.php?id=127">http://www.milkingredients.ca/index-eng.php?id=127</a>
Centre of Excellence in Next Generation Networks (CENGN)	<a href="http://www.nce-rce.gc.ca/NetworksCentres-CentresReseaux/CECR-CECR/CENGN_eng.asp">http://www.nce-rce.gc.ca/NetworksCentres-CentresReseaux/CECR-CECR/CENGN_eng.asp</a>
Canada's new superclusters	<a href="http://www.ic.gc.ca/eic/site/093.nsf/eng/00016.html">http://www.ic.gc.ca/eic/site/093.nsf/eng/00016.html</a>
Bioenterprise Seed Funding	<a href="http://www.bioenterprise.ca/index.cfm?page=seedfund_on">http://www.bioenterprise.ca/index.cfm?page=seedfund_on</a>

Innovation	Web
Alberta Innovates - Bio Sector - IDeal Program (Prion)	<a href="https://albertainnovates.ca/funding-prion/ideal-program/">https://albertainnovates.ca/funding-prion/ideal-program/</a>
Alberta Innovates - Bio Sector - Alberta Bio Future	<a href="https://albertainnovates.ca/funding-alberta-bio-future/">https://albertainnovates.ca/funding-alberta-bio-future/</a>
Alberta Innovates - Health Innovations - Training and Early Career Development	<a href="https://albertainnovates.ca/funding-health-innovations/">https://albertainnovates.ca/funding-health-innovations/</a>
Alberta Innovates - Clean Energy (Advanced Hydrocarbons)	<a href="https://albertainnovates.ca/funding-advanced-hydrocarbons/">https://albertainnovates.ca/funding-advanced-hydrocarbons/</a>
Alberta Innovates - Clean Energy (Clean Technology)	<a href="https://albertainnovates.ca/funding-clean-technology/">https://albertainnovates.ca/funding-clean-technology/</a>
Alberta Innovates - Cross-Sectoral Investments (Alberta Small Business Research and Innovation Initiative)	<a href="https://albertainnovates.ca/funding-entrepreneurial-investments/asbiri/">https://albertainnovates.ca/funding-entrepreneurial-investments/asbiri/</a>
Alberta Innovates - Cross Sectoral Investments (Product Demonstration Program)	<a href="https://albertainnovates.ca/funding-entrepreneurial-investments/product-demonstration-program/">https://albertainnovates.ca/funding-entrepreneurial-investments/product-demonstration-program/</a>
Alberta Innovates - Cross Sectoral Investments (Alberta-China International Technology Partnership Program)	<a href="https://albertainnovates.ca/funding-entrepreneurial-investments/alberta-china/">https://albertainnovates.ca/funding-entrepreneurial-investments/alberta-china/</a>
Alberta Innovates - Cross Sectoral Investments (Alberta-China International Technology Partnership Program)	<a href="https://albertainnovates.ca/funding-entrepreneurial-investments/alberta-ialisco/">https://albertainnovates.ca/funding-entrepreneurial-investments/alberta-ialisco/</a>
Strategic and international technology partnerships	<a href="https://www.alberta.ca/strategic-international-technology-partnerships.aspx">https://www.alberta.ca/strategic-international-technology-partnerships.aspx</a>
Alberta Innovates - Clean Technology Development (CTD) program	<a href="https://albertainnovates.ca/funding-clean-technology/climate-change-innovation-and-technology-framework-ccitf/#CTD">https://albertainnovates.ca/funding-clean-technology/climate-change-innovation-and-technology-framework-ccitf/#CTD</a>
Alberta Innovates - Clean Technology Commercialization Program	<a href="https://albertainnovates.ca/funding-clean-technology/climate-change-innovation-and-technology-framework-ccitf/#CTD">https://albertainnovates.ca/funding-clean-technology/climate-change-innovation-and-technology-framework-ccitf/#CTD</a>
Alberta Innovates - Clean Technology Facilities Support Program	<a href="https://albertainnovates.ca/funding-clean-technology/climate-change-innovation-and-technology-framework-ccitf/#CTD">https://albertainnovates.ca/funding-clean-technology/climate-change-innovation-and-technology-framework-ccitf/#CTD</a>
Alberta Innovates - Clean Technology Large-Scale Demonstration and Innovative Deployment Program	<a href="https://albertainnovates.ca/funding-clean-technology/climate-change-innovation-and-technology-framework-ccitf/#CTD">https://albertainnovates.ca/funding-clean-technology/climate-change-innovation-and-technology-framework-ccitf/#CTD</a>
Alberta Innovates - Water and Land (Land and Biodiversity)	<a href="https://albertainnovates.ca/funding/water-and-land/land-and-biodiversity/">https://albertainnovates.ca/funding/water-and-land/land-and-biodiversity/</a>
Alberta Innovates - Water and Land (Tailings Management)	<a href="https://albertainnovates.ca/funding/water-and-land/tailings-management/">https://albertainnovates.ca/funding/water-and-land/tailings-management/</a>



# Rocky Mountain House 2020 Community Profile

Innovation	Web
Irrigation Efficiency	<a href="https://cap.alberta.ca/CAP/program/IRR_EFFICIENCY">https://cap.alberta.ca/CAP/program/IRR_EFFICIENCY</a>
Alberta-Europe Technology Collaboration Fund	<a href="http://www.gccir.ca/alberta-europe-collaboration-fund/">http://www.gccir.ca/alberta-europe-collaboration-fund/</a>
Visitor Services Innovation Fund	<a href="https://www.alberta.ca/visitor-services-innovation-fund.aspx">https://www.alberta.ca/visitor-services-innovation-fund.aspx</a>
Economic Development Initiative	<a href="https://www.wd-deo.gc.ca/eng/11564.asp">https://www.wd-deo.gc.ca/eng/11564.asp</a>

Environment	Web
Alberta Community Resilience Program	<a href="http://aep.alberta.ca/water/programs-and-services/alberta-community-resilience-program/default.aspx">http://aep.alberta.ca/water/programs-and-services/alberta-community-resilience-program/default.aspx</a>
SD Tech Fund	<a href="https://www.sdtc.ca/en/apply/funds/">https://www.sdtc.ca/en/apply/funds/</a>
Alberta Innovates - Clean Energy (Advanced Hydrocarbons)	<a href="https://albertainnovates.ca/funding-advanced-hydrocarbons/">https://albertainnovates.ca/funding-advanced-hydrocarbons/</a>
Alberta Innovates - Cross Sectoral Investments (Alberta Innovation Voucher and Micro-Voucher Programs)	<a href="https://albertainnovates.ca/funding-entrepreneurial-investments/alberta-innovation-voucher/">https://albertainnovates.ca/funding-entrepreneurial-investments/alberta-innovation-voucher/</a>
Alberta Innovates - Clean Technology Development (CTD) program	<a href="https://albertainnovates.ca/funding-clean-technology/climate-change-innovation-and-technology-framework-cciff/#CTD">https://albertainnovates.ca/funding-clean-technology/climate-change-innovation-and-technology-framework-cciff/#CTD</a>
Alberta Innovates - Clean Technology Commercialization Program	<a href="https://albertainnovates.ca/funding-clean-technology/climate-change-innovation-and-technology-framework-cciff/#CTD">https://albertainnovates.ca/funding-clean-technology/climate-change-innovation-and-technology-framework-cciff/#CTD</a>
Alberta Innovates - Clean Technology Business Innovation (CTBI) Voucher Program	<a href="https://albertainnovates.ca/funding-clean-technology/climate-change-innovation-and-technology-framework-cciff/#CTD">https://albertainnovates.ca/funding-clean-technology/climate-change-innovation-and-technology-framework-cciff/#CTD</a>
Alberta Innovates - Clean Technology Facilities Support Program	<a href="https://albertainnovates.ca/funding-clean-technology/climate-change-innovation-and-technology-framework-cciff/#CTD">https://albertainnovates.ca/funding-clean-technology/climate-change-innovation-and-technology-framework-cciff/#CTD</a>
Alberta Innovates - Clean Technology Large-Scale Demonstration and Innovative Deployment Program	<a href="https://albertainnovates.ca/funding-clean-technology/climate-change-innovation-and-technology-framework-cciff/#CTD">https://albertainnovates.ca/funding-clean-technology/climate-change-innovation-and-technology-framework-cciff/#CTD</a>
Alberta Innovates - Water and Land (Land and Biodiversity)	<a href="https://albertainnovates.ca/funding/water-and-land/land-and-biodiversity/">https://albertainnovates.ca/funding/water-and-land/land-and-biodiversity/</a>
Alberta Innovates - Water and Land (Tailings Management)	<a href="https://albertainnovates.ca/funding/water-and-land/tailings-management/">https://albertainnovates.ca/funding/water-and-land/tailings-management/</a>



# Rocky Mountain House 2020 Community Profile

Environment	Web
GreenSTEM	<a href="https://www.alberta.ca/greenstem.aspx">https://www.alberta.ca/greenstem.aspx</a>
Alberta Municipal Water/Wastewater Partnership (AMWWP)	<a href="http://www.transportation.alberta.ca/2719.htm">http://www.transportation.alberta.ca/2719.htm</a>
EcoAction Community Funding Program	<a href="http://www1.agric.gov.ab.ca/general/progserv.nsf/all/pgmsrv221">http://www1.agric.gov.ab.ca/general/progserv.nsf/all/pgmsrv221</a>
Bayer Crop Science Canada - Investing in Canadian Communities	<a href="https://www.cropscience.bayer.ca/Our-Company/Community-Investment.aspx">https://www.cropscience.bayer.ca/Our-Company/Community-Investment.aspx</a>