

Town of Rocky Mountain House

Architectural Guidelines



What are Architectural Guidelines?

Architectural guidelines (also called Community Design Codes) are intended to encourage a consistent built form, strengthen community identity, support tourism branding, and promote the use of high-quality materials throughout the Town.

Are Architectural Guidelines mandatory?

No. The voluntary Architectural Guidelines have been in place since 2011.

What's included in the Town of Rocky Mountain House Architectural Guidelines?

The existing guidelines promote a Historical Hudson's Bay Trading Fort theme inspired by Rocky Mountain House's fur trade history, David Thompson and the Town's connection to the National Historic Site. The guidelines encourage developers and builders to reflect a sensitivity to nature, a handcrafted appearance and human-oriented design.

Can a building include modern elements and still meet the guidelines?

Yes. The guidelines recognize that modern materials and construction methods can be used, provided the overall design still reflects the fur trade theme, uses quality materials and maintains the intended character.

Do the guidelines apply to all developments?

Yes, any new building or exterior renovation of an existing building can incorporate these guidelines in its design. These guidelines can be applied to all residential and commercial/industrial developments.

1 What colour schemes are recommended by the Architectural Guidelines?

Natural, muted and subtle colours are encouraged:



Colour choices should reflect tones found in materials such as timber, rock, and clay rather than using sharp, glossy, or highly contrasting finishes.



Contact Us

Planning & Community Development Department

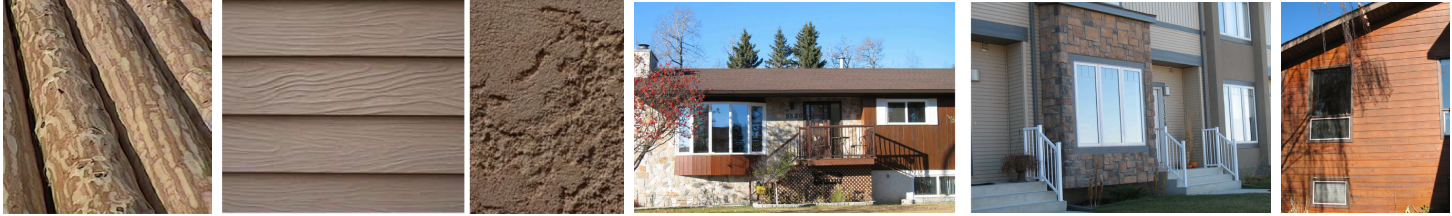
Email: PlanningDept@trmh.ca

Phone: 403-847-5260

www.rockymtnhouse.com

2 What building materials and styles are recommended by the Architectural Guidelines?

Siding: Wood or wood-style siding is preferred, in the style of palisade, Red River or wood-style stucco. Cedar shakes, composite siding or full rock cladding may be considered.



Beams & Trim: Squared timber in a substantial size, such as 4 in. x 4 in. Stone-style trim, sills, and ledges to complement wood-themed structures and add texture and quality. Wood or wood-designed shutters are encouraged, preferably in neutral colours or stain.



Façades: Commercial buildings should reflect the fur trade era and are encouraged to resemble traditional fort construction, especially post-in-ground (palisade) or post-on-sill (Red River frame) styles. Stone, rock or wood may also feature.



3 What types of signage are encouraged by the Architectural Guidelines?

For commercial or industrial properties, **signage** should use natural-looking materials and coordinate with the building's design. Projecting signs, durable fascia signs, and awning or canopy signs may be suitable. Electric, corrugated plastic, vinyl, or tin signs are not strongly supported.

